

Product datasheet for **TA354515**

Osteopontin (SPP1) Rabbit Polyclonal Antibody

Product data:

Product Type:	Primary Antibodies
Applications:	IHC, WB
Recommended Dilution:	WB 0.1-1 µg/ml ELISA 0.01-0.1 µg/ml IP 2-5 µg/ml IHC 2-10 µg/ml FC 5-10 µg/ml
Reactivity:	Rat, Mouse, Human
Host:	Rabbit
Isotype:	IgG
Clonality:	Polyclonal
Immunogen:	A synthetic peptide corresponding to the internal portion of Osteopontin protein sequence. This sequence is identical to human, rat and mouse origins.
Formulation:	This affinity purified antibody is supplied in sterile Phosphate buffered saline (pH7.2) containing antibody stabilizer.
Purification:	The Rabbit IgG is purified by Epitope Affinity Purification
Conjugation:	Unconjugated
Storage:	Store at -20°C as received.
Stability:	Stable for 12 months from date of receipt.
Predicted Protein Size:	~34 kDa
Gene Name:	secreted phosphoprotein 1
Database Link:	NP_000573 Entrez Gene 20750 Mouse Entrez Gene 25353 Rat Entrez Gene 6696 Human P10451
Background:	Osteopontin (OPN or Early T-Lymphocyte Activation-1: Eta-1), also referred to as transformation-associated secreted phosphoprotein, bone sialoprotein I, and minopotin, is a highly phosphorylated and glycosylated phosphoprotein that is expressed in many tissues. It is acidic, calcium-binding, cell surface-binding sequences (RGD)-containing protein was originally isolated from bone matrix. Osteopontin has been found in kidney, placenta, blood vessels. It is over-expressed in a variety of cancers, including lung, breast, colorectal, stomach, ovarian, melanoma and mesothelioma.
Synonyms:	BNSP; BSPI; ETA-1; OPN

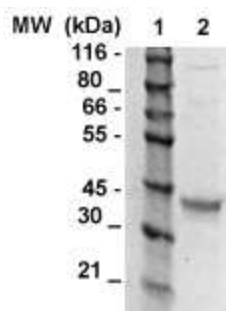


[View online »](#)

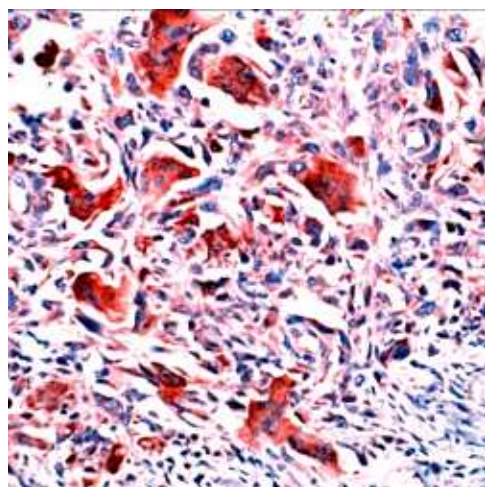
Protein Families: Druggable Genome, Secreted Protein

Protein Pathways: ECM-receptor interaction, Focal adhesion, Toll-like receptor signaling pathway

Product images:



WB: The Cell lysate derived from HT-29 (Lane 2) were resolved onto 10% SDS-PAGE, transferred onto NC membrane, and immunoblotted by Rabbit anti-Osteopontin at 1:500. An immunoreactive band around ~34 kDa was observed.



IHC: Human breast cancer tissue stained with Anti-Rabbit anti-Osteopontin antibody at 1:100 for 10min at RT. Staining of formalin-fixed tissue requires boiling tissue sections in 10mM Citrate Buffer, pH 6.0 for 10 min followed by cooling at RT for 20min.