

Product datasheet for **TA354511**

TSH beta (TSHB) Mouse Monoclonal Antibody [Clone ID: M1A10]

Product data:

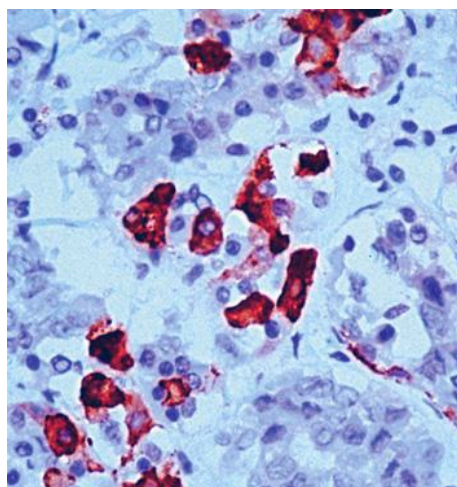
Product Type:	Primary Antibodies
Clone Name:	M1A10
Applications:	IHC, WB
Recommended Dilution:	WB 0.1-1 µg/ml ELISA 0.01-0.1 µg/ml IP 2-5 µg/ml IHC 2-10 µg/ml FC 5-10 µg/ml
Reactivity:	Human
Host:	Mouse
Isotype:	IgG1
Clonality:	Monoclonal
Immunogen:	A recombinant protein of human TSH.
Formulation:	This affinity purified antibody is supplied in sterile Phosphate buffered saline (pH7.2) containing antibody stabilizer.
Purification:	The mouse IgG is purified by Protein A-Affinity Chromatography according to Isotyping
Conjugation:	Unconjugated
Storage:	Store at -20°C as received.
Stability:	Stable for 12 months from date of receipt.
Predicted Protein Size:	~28 kDa
Gene Name:	thyroid stimulating hormone beta
Database Link:	NP_000540 Entrez Gene 7252 Human P01222
Synonyms:	TSH-B; TSH-BETA
Protein Families:	Druggable Genome, Secreted Protein
Protein Pathways:	Autoimmune thyroid disease, Neuroactive ligand-receptor interaction



[View online »](#)

Product images:

WB: The full length of human TSH protein was immunoblotted by with Mouse anti-TSH antibody at 1:500. An immunoreactive band is observed.



IHC: Human anterior pituitary gland tissue stained with Mouse anti-TSH antibody, at 1:200 for 10 min at RT. Staining of formalin-fixed tissue requires boiling tissue sections in 10mM Citrate Buffer, pH 6.0 for 10 min followed by cooling at RT for 20min.