

## Product datasheet for **TA354507**

### SOCS2 Rabbit Polyclonal Antibody

#### Product data:

Product Type:	Primary Antibodies
Applications:	WB
Recommended Dilution:	WB 0.1-1 µg/ml ELISA 0.01-0.1 µg/ml IP 2-5 µg/ml IHC 2-10 µg/ml FC 5-10 µg/ml
Reactivity:	Human, Mouse, Rat
Host:	Rabbit
Isotype:	IgG
Clonality:	Polyclonal
Immunogen:	A synthetic peptide corresponding to the C-terminus of SOCS-2 protein from human, mouse and rat origins.
Formulation:	This affinity purified antibody is supplied in sterile Phosphate buffered saline (pH7.2) containing antibody stabilizer.
Purification:	The Rabbit IgG is purified by Epitope Affinity Purification
Conjugation:	Unconjugated
Storage:	Store at -20°C as received.
Stability:	Stable for 12 months from date of receipt.
Predicted Protein Size:	23 kDa
Gene Name:	suppressor of cytokine signaling 2
Database Link:	<a href="#">NP_001257396</a> <a href="#">Entrez Gene 84607 Rat</a> <a href="#">Entrez Gene 216233 Mouse</a> <a href="#">Entrez Gene 8835 Human</a> <a href="#">O14508</a>



[View online »](#)

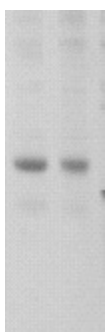
**Background:** Cytokines induce a variety of biological responses by binding to specific cell surface receptors and activating cytoplasmic signal transduction pathways which are suppressed by other transcriptional factors. Proteins that mediate these signals from the cell surface to the nucleus include JAKs and STATs, while SOCS (Suppressor of cytokine signaling) proteins inhibit those signaling. The SOCS family comprises at least 8 members, SOCS1 to SOCS7 and CIS (cytokine inducible SH2 containing protein). Structurally, the SOCS proteins are composed of an N terminal region of variable length and amino acid composition, a central SH2 domain, and a previously unrecognized C terminal motif named the SOCS box. SOCS 2 is considered to regulate postnatal growth, such as GH/IGF-1 pathway.

**Synonyms:** CIS2; Cish2; SOCS-2; SSI-2; SSI2; STAT12

**Protein Families:** Druggable Genome

**Protein Pathways:** Insulin signaling pathway, Jak-STAT signaling pathway, Type II diabetes mellitus

### Product images:



WB: The tissue /cell lysates derived from mouse liver (lane 1), mouse muscle (Lane 2) were immunoprobed by Rabbit anti-SOCS-2 at 1:500. An immunoreactive band is observed around ~23kDa.