

Product datasheet for **TA354506**

SOCS1 Rabbit Polyclonal Antibody

Product data:

Product Type:	Primary Antibodies
Applications:	WB
Recommended Dilution:	WB 0.1-1 µg/ml ELISA 0.01-0.1 µg/ml IP 2-5 µg/ml IHC 2-10 µg/ml FC 5-10 µg/ml
Reactivity:	Human, Mouse, Rat
Host:	Rabbit
Isotype:	IgG
Clonality:	Polyclonal
Immunogen:	A synthetic peptide corresponding to C-terminus of SOCS-1 protein from human and mouse origins.
Formulation:	This affinity purified antibody is supplied in sterile Phosphate buffered saline (pH7.2) containing antibody stabilizer.
Purification:	The Rabbit IgG is purified by Epitope Affinity Purification
Conjugation:	Unconjugated
Storage:	Store at -20°C as received.
Stability:	Stable for 12 months from date of receipt.
Predicted Protein Size:	4
Gene Name:	suppressor of cytokine signaling 1
Database Link:	NP_003736 Entrez Gene 12703 Mouse Entrez Gene 252971 Rat Entrez Gene 8651 Human O15524



[View online »](#)

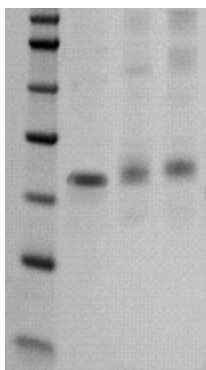
Background: Cytokines induce a variety of biological responses by binding to specific cell surface receptors and activating cytoplasmic signal transduction pathways which are suppressed by other transcriptional factors. Proteins that mediate these signals from the cell surface to the nucleus include JAKs and STATs, while SOCS (Suppressor of cytokine signaling) proteins inhibit those signaling. The SOCS family comprises at least 8 members, SOCS1 to SOCS7 and CIS (cytokine inducible SH2 containing protein). Structurally, the SOCS proteins are composed of an N terminal region of variable length and amino acid composition, a central SH2 domain, and a previously unrecognized C terminal motif named the SOCS box. SOCS 1 inhibition of signal transduction appears to occur by binding to and inhibiting the catalytic activity of members of JAK family of cytoplasmic kinases (direct JAK2 kinase inhibition). SOCS1 is an important negative regulator of JAK-STAT signal pathway.

Synonyms: CIS1; CISH1; JAB; SOCS-1; SSI-1; SSI1; TIP3

Protein Families: Druggable Genome, Stem cell - Pluripotency, Stem cell relevant signaling - JAK/STAT signaling pathway

Protein Pathways: Insulin signaling pathway, Jak-STAT signaling pathway, Type II diabetes mellitus, Ubiquitin mediated proteolysis

Product images:



WB: The tissue /cell lysate derived from mouse liver (lane 2), mouse muscle (Lane 3) and MCF-7 (Lane 4) were immunoprobed by Rabbit anti-SCOS-1 at 1:500. An immunoreactive band is observed around ~24kDa.