

## Product datasheet for **TA354499**

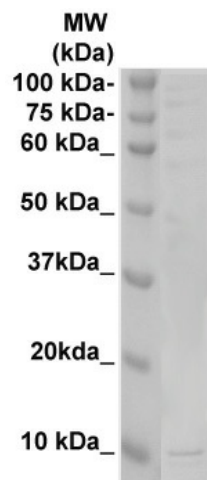
### TAFA2 Rabbit Polyclonal Antibody

#### Product data:

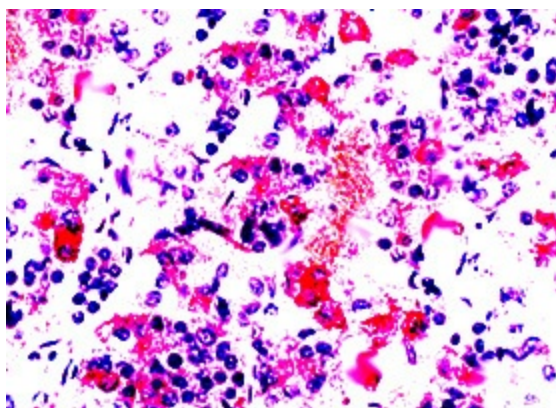
Product Type:	Primary Antibodies
Applications:	IHC, WB
Recommended Dilution:	WB 0.1-1 µg/ml ELISA 0.01-0.1 µg/ml IP 2-5 µg/ml IHC 2-10 µg/ml FC 5-10 µg/ml
Reactivity:	Human, Mouse, Rat
Host:	Rabbit
Isotype:	IgG
Clonality:	Polyclonal
Immunogen:	A 15 aa synthetic peptide derived from N-terminus of TAFA2 protein conjugated to a carrier protein.
Formulation:	This affinity purified antibody is supplied in sterile Phosphate buffered saline (pH7.2) containing antibody stabilizer.
Purification:	The Rabbit IgG is purified by Epitope Affinity Purification
Conjugation:	Unconjugated
Storage:	Store at -20°C as received.
Stability:	Stable for 12 months from date of receipt.
Predicted Protein Size:	~12 kDa
Gene Name:	family with sequence similarity 19 member A2, C-C motif chemokine like
Database Link:	<a href="#">NP_848634</a> <a href="#">Entrez Gene 268354</a> <a href="#">MouseEntrez Gene 680647</a> <a href="#">RatEntrez Gene 338811</a> <a href="#">Human Q8N3H0</a>
Synonyms:	TAFA-2; TAFA2



[View online »](#)

**Product images:**

WB: The whole cell lysate derived from mouse brain tissue was immunoblotted Rabbit anti-TAF A2 at 1:500. An immunoreactive band around 12 kDa was observed.



IHC: Human brain tissue was immune-stained with Anti-TAF A2 antibody, at 1:100 for 10 min at RT. Staining of formalin-fixed tissue requires boiling tissue sections in 10 mM Citrate Buffer, pH 6.0 for 10 min followed by cooling at RT for 20 min.