

Product datasheet for **TA354498**

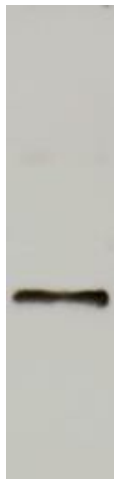
METRN Rabbit Polyclonal Antibody

Product data:

Product Type:	Primary Antibodies
Applications:	WB
Recommended Dilution:	WB 0.1-1 µg/ml ELISA 0.01-0.1 µg/ml IP 2-5 µg/ml IHC 2-10 µg/ml FC 5-10 µg/ml
Reactivity:	Human, Mouse, Rat
Host:	Rabbit
Isotype:	IgG
Clonality:	Polyclonal
Formulation:	This affinity purified antibody is supplied in sterile Phosphate buffered saline (pH7.2) containing antibody stabilizer.
Purification:	The Rabbit IgG is purified by Epitope Affinity Purification
Conjugation:	Unconjugated
Storage:	Store at -20°C as received.
Stability:	Stable for 12 months from date of receipt.
Predicted Protein Size:	~30 kDa
Gene Name:	meteorin, glial cell differentiation regulator
Database Link:	NP_076947 Entrez Gene 70083 MouseEntrez Gene 287151 RatEntrez Gene 79006 Human Q9UJH8
Synonyms:	C16orf23; c380A1.2
Protein Families:	Secreted Protein



[View online »](#)

Product images:

WB: The whole cell lysate derived from mouse brain tissue was immunoblotted by Rabbit anti-METRN (CT) at 1:500. An immunoreactive band around 30 kDa was observed.