

Product datasheet for **TA354494**

alpha smooth muscle Actin (ACTA2) Rabbit Polyclonal Antibody

Product data:

Product Type:	Primary Antibodies
Applications:	IHC, WB
Recommended Dilution:	WB 0.1-1 µg/ml ELISA 0.01-0.1 µg/ml IP 2-5 µg/ml IHC 2-10 µg/ml FC 5-10 µg/ml
Reactivity:	Human, Mouse, Rat
Host:	Rabbit
Isotype:	IgG
Clonality:	Polyclonal
Immunogen:	A 10aa synthetic peptide corresponding to N-term of human Actin protein. This sequence is identical in human, mouse, rat, bovine and chicken.
Formulation:	This affinity purified antibody is supplied in sterile Phosphate buffered saline (pH7.2) containing antibody stabilizer.
Purification:	The Rabbit IgG is purified by Epitope Affinity Purification
Conjugation:	Unconjugated
Storage:	Store at -20°C as received.
Stability:	Stable for 12 months from date of receipt.
Predicted Protein Size:	~42 kDa
Gene Name:	actin, alpha 2, smooth muscle, aorta
Database Link:	NP_001135417 Entrez Gene 11475 Mouse Entrez Gene 81633 Rat Entrez Gene 59 Human P62736



[View online »](#)

Background:

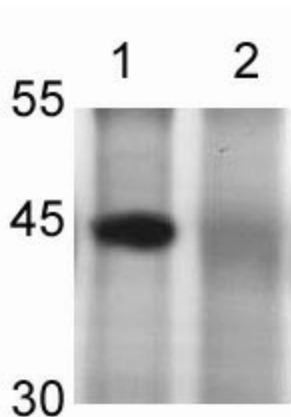
The Actin protein, a component of the eukaryotic cytoskeleton, is highly conserved between multiple species. It is involved in various types of cell motility, and maintenance of the cytoskeleton. In vertebrates, three main groups of actin isoforms, alpha, beta and gamma have been identified. The alpha actins are found in muscle tissues and are a major constituent of the contractile apparatus. The beta and gamma actins co-exist in most cell types as components of the cytoskeleton, and as mediators of internal cell motility. The levels of the Actin protein may vary between different cell types, but are consistent within a given cell type, and for this reason, Actin protein levels are considered an internal control for protein loading.

Synonyms:

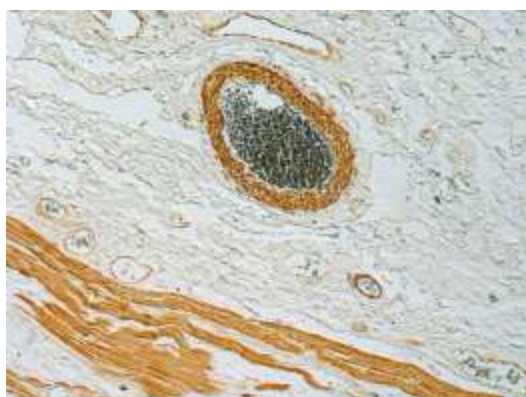
AAT6; ACTSA; MYMY5

Protein Pathways:

Vascular smooth muscle contraction

Product images:

WB: Tissue lysate from Mouse lung was resolved onto 12% SDS-PAGE and transferred onto NC Membrane, then probed by Anti-Actin antibody,. Left lane was depleted by immunizing peptide.



IHC: Human colon tissue stained with Anti-Actin antibody, at 1:200 for 10 min at RT. Staining of formalin-fixed tissue requires boiling tissue sections in 10 mM Citrate Buffer, pH 6.0 for 10 min followed by cooling at RT for 20 min.