

## Product datasheet for **TA354491**

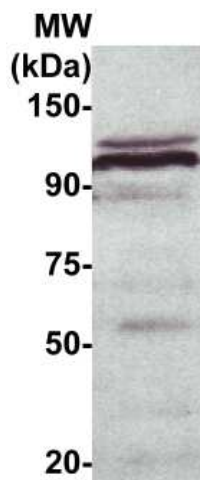
### CD31 (PECAM1) Rabbit Polyclonal Antibody

#### Product data:

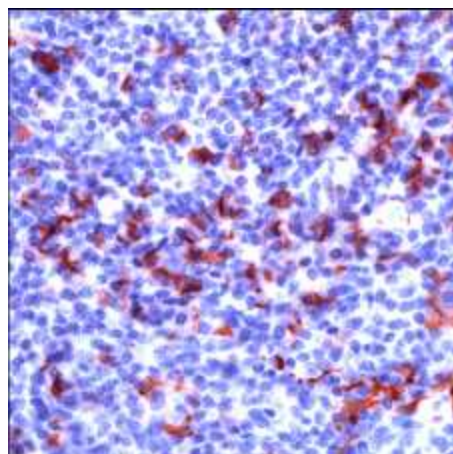
Product Type:	Primary Antibodies
Applications:	IHC, WB
Recommended Dilution:	WB 0.1-1 µg/ml ELISA 0.01-0.1 µg/ml IP 2-5 µg/ml IHC 2-10 µg/ml FC 5-10 µg/ml
Reactivity:	Human
Host:	Rabbit
Isotype:	IgG
Clonality:	Polyclonal
Immunogen:	A synthetic peptide corresponding to C-terminus of mouse CD31 protein.
Formulation:	This affinity purified antibody is supplied in sterile Phosphate buffered saline (pH7.2) containing antibody stabilizer.
Purification:	The Rabbit IgG is purified by Epitope Affinity Purification
Conjugation:	Unconjugated
Storage:	Store at -20°C as received.
Stability:	Stable for 12 months from date of receipt.
Predicted Protein Size:	100 and 130 kDa
Gene Name:	platelet and endothelial cell adhesion molecule 1
Database Link:	<a href="#">NP_000433</a> <a href="#">Entrez Gene 5175 Human P16284</a>
Background:	CD31 antigen is a glycoprotein expressed on endothelial cells and in platelets, monocytes, neutrophils, and some types of T-cells, and makes up a large portion of endothelial cell intercellular junctions. The encoded protein is a member of the immunoglobulin superfamily and is likely involved in leukocyte migration, angiogenesis, and integrin activation.
Synonyms:	CD31; EndoCAM; endoCAM; GPIIA; PECA1; PECAM-1
Protein Families:	Druggable Genome, ES Cell Differentiation/IPS, Transmembrane
Protein Pathways:	Cell adhesion molecules (CAMs), Leukocyte transendothelial migration



[View online »](#)

**Product images:**

WB: The cell lysate derived from Jurkat was immunoblotted by the Rabbit anti-CD31 antibody at 1:500. The double immunoreactive bands around 100/130 were observed.



IHC: Human tonsil tissue stained with Rabbit anti-CD31 antibody at 1:50 for 30 min, RT. Staining of formalin-fixed tissues requires boiling tissue section in 10 mM Citrate Buffer, pH 6.0 for 10 min followed by cooling at RT for 20 min.