

Product datasheet for **TA354480**

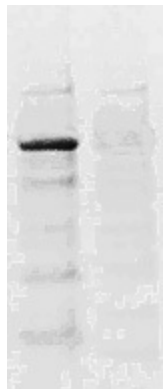
CREB1 Rabbit Polyclonal Antibody

Product data:

Product Type:	Primary Antibodies
Applications:	Dot, WB
Recommended Dilution:	WB 0.1-1 µg/ml ELISA 0.01-0.1 µg/ml IP 2-5 µg/ml IHC 2-10 µg/ml FC 5-10 µg/ml
Reactivity:	Human
Host:	Rabbit
Isotype:	IgG
Clonality:	Polyclonal
Immunogen:	A synthetic peptide corresponding to the epitope of RPSYR with a single phosphorylation site Ser133.
Formulation:	This affinity purified antibody is supplied in sterile Tris-buffered saline (pH7.2) containing antibody stabilizer.
Purification:	The Rabbit IgG is purified by site-modified Epitope Affinity Purification.
Conjugation:	Unconjugated
Storage:	Store at -20°C as received.
Stability:	Stable for 12 months from date of receipt.
Predicted Protein Size:	40 kDa
Gene Name:	cAMP responsive element binding protein 1
Database Link:	NP_004370 Entrez Gene 1385 Human P16220
Background:	CREB is a bZIP transcription factor that binds the cAMP response element (CRE) and activates target genes. It is involved in many extracellular signals resulting in regulation of a variety of cellular responses. Phosphorylation of CREB at Ser133 by various kinases, such as PKA, PKC, CaM kinase II and IV, is necessary for CREB signaling.
Synonyms:	CREB
Protein Families:	Druggable Genome, Transcription Factors
Protein Pathways:	Antigen processing and presentation, Huntington's disease, Melanogenesis, Prostate cancer



[View online »](#)

Product images:

WB: The tissue lysate derived from ischemia rat brain was immunoprecipitated by Rabbit anti-CREB antibody, then immuno-blotted by the Rabbit anti-phospho-CREB (pS133) antibody at 1:500 (lane 1), Lane 2: negative control.



DB: 1 ug peptide was blot onto NC membrane
A: CREB (pS133) B: CREB (non phosphorylated) C: Non-related Phosphopeptide) Followed by rabbit antibodies incubation at a 1:1000 dilution: 1: Rabbit anti-CREB (pS188) 2: Rabbit anti-CREB (Paired S133)