

Product datasheet for **TA354479**

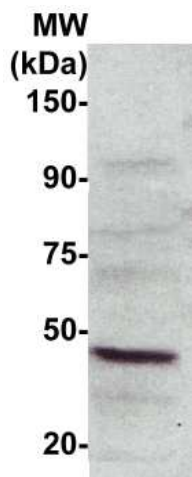
Nck beta (NCK2) Rabbit Polyclonal Antibody

Product data:

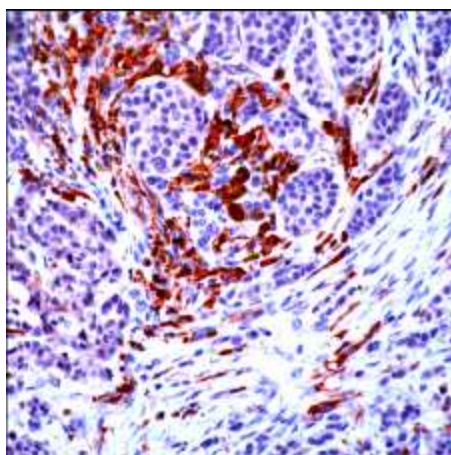
Product Type:	Primary Antibodies
Applications:	IHC, WB
Recommended Dilution:	WB 0.1-1 µg/ml ELISA 0.01-0.1 µg/ml IP 2-5 µg/ml IHC 2-10 µg/ml FC 5-10 µg/ml
Reactivity:	Human
Host:	Rabbit
Isotype:	IgG
Clonality:	Polyclonal
Immunogen:	A synthetic peptide corresponding to the C-terminus of human NCK2 protein.
Formulation:	This affinity purified antibody is supplied in sterile Phosphate buffered saline (pH7.2) containing antibody stabilizer.
Purification:	The Rabbit IgG is purified by Epitope Affinity Purification
Conjugation:	Unconjugated
Storage:	Store at -20°C as received.
Stability:	Stable for 12 months from date of receipt.
Predicted Protein Size:	45 kDa
Gene Name:	NCK adaptor protein 2
Database Link:	NP_001004720 Entrez Gene 8440 Human O43639
Background:	The NCK family of SH2/SH3 adaptor proteins consists of two members, NCK1 and NCK2, which couple tyrosine kinase signaling, including the EGF and PDGF receptor-pathways, to downstream signaling proteins. The NCK2 protein binds human PDGFR-b (Tyr-1009); overexpression of NCK2 inhibits PDGF-induced membrane ruffling and lamellipod formation.
Synonyms:	GRB4; NCKbeta
Protein Families:	Druggable Genome
Protein Pathways:	Axon guidance, ErbB signaling pathway, Pathogenic Escherichia coli infection, T cell receptor signaling pathway



[View online »](#)

Product images:

WB: The cell lysate derived from MCF-7 was immunoblotted by the Rabbit anti-NCK2 antibody at 1:500. An immunoreactive band is observed at ~45 kDa.



IHC: Human breast cancer stained with Rabbit anti-NCK2 antibody at 1:50 for 30 min, RT. (Staining of formalin-fixed tissues requires boiling tissue section in 10 mM Citrate Buffer, pH 6.0 for 10 min followed by cooling at RT for 20 min.)