

## Product datasheet for **TA354470**

### CD133 (PROM1) Rabbit Polyclonal Antibody

#### Product data:

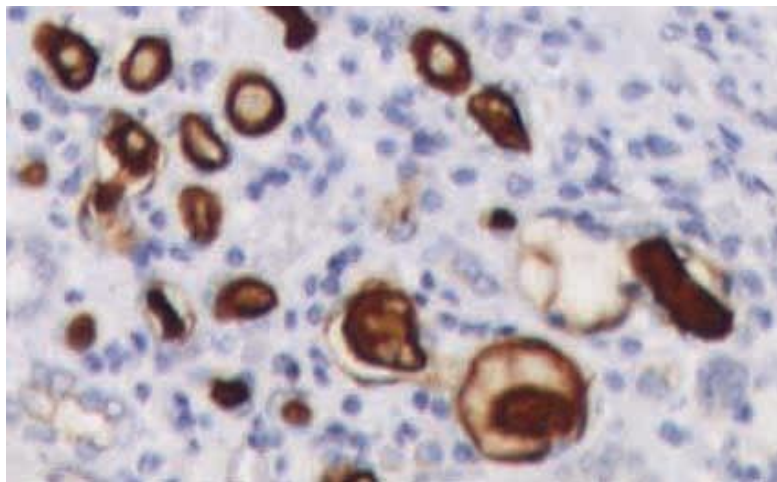
Product Type:	Primary Antibodies
Applications:	IHC, WB
Recommended Dilution:	WB 0.1-1 µg/ml ELISA 0.01-0.1 µg/ml IP 2-5 µg/ml IHC 2-10 µg/ml FC 5-10 µg/ml
Reactivity:	Human, Mouse, Rat
Host:	Rabbit
Isotype:	IgG
Clonality:	Polyclonal
Immunogen:	A 18aa synthetic peptide corresponding to C-terminus human CD133.
Formulation:	This affinity purified antibody is supplied in sterile Phosphate buffered saline (pH7.2) containing antibody stabilizer.
Purification:	The Rabbit IgG is purified by Epitope Affinity Purification
Conjugation:	Unconjugated
Storage:	Store at -20°C as received.
Stability:	Stable for 12 months from date of receipt.
Predicted Protein Size:	117 kDa (Predicted at 97 kDa)
Gene Name:	prominin 1
Database Link:	<a href="#">NP_001139319</a> <a href="#">Entrez Gene 19126 Mouse</a> <a href="#">Entrez Gene 60357 Rat</a> <a href="#">Entrez Gene 8842 Human</a> <a href="#">O43490</a>
Synonyms:	AC133; CD133; CORD12; MCDR2; MSTP061; PROML1; RP41; STGD4
Protein Families:	Druggable Genome, ES Cell Differentiation/IPS, Transmembrane



[View online »](#)

**Product images:**

WB: The tissue lysate derived from mouse kidney was immunoprobed by Rabbit anti-CD133 antibody at 1:500. An immunoreactive band is observed around ~117kDa. This band is abolished by pre-incubation with immunizing peptide.



IHC: Human kidney tissue stained with Anti-CD133 antibody, at 1:100 for 10 min at RT. Staining of formalin-fixed tissue requires boiling tissue sections in 10 mM Citrate Buffer, pH 6.0 for 10 min followed by cooling at RT for 20 min.