

Product datasheet for **TA354468**

Telomerase reverse transcriptase (TERT) Rabbit Polyclonal Antibody

Product data:

Product Type:	Primary Antibodies
Applications:	IHC, IP
Recommended Dilution:	WB 0.1-1 µg/ml ELISA 0.01-0.1 µg/ml IP 2-5 µg/ml IHC 2-10 µg/ml FC 5-10 µg/ml
Reactivity:	Human
Host:	Rabbit
Isotype:	IgG
Clonality:	Polyclonal
Immunogen:	A synthetic peptide corresponding to the C-term of TERT protein. This sequence is identical to human, mouse and rat.
Formulation:	This affinity purified antibody is supplied in sterile Phosphate buffered saline (pH7.2) containing antibody stabilizer.
Purification:	The Rabbit IgG is purified by Epitope Affinity Purification
Conjugation:	Unconjugated
Storage:	Store at -20°C as received.
Stability:	Stable for 12 months from date of receipt.
Predicted Protein Size:	~127 kDa
Gene Name:	telomerase reverse transcriptase
Database Link:	NP_937983 Entrez Gene 7015 Human O14746

Background: Telomeres are specialized structures at the ends of eukaryotic chromosomes which appear to function in chromosome stabilization, positioning and replication. At each cell division, the length of telomeric TTAGGG DNA repeats is shortened and cells ultimately stop dividing. Telomerase is a reverse transcriptase that synthesizes telomere DNA thereby compensating for telomere loss. There are three major components of telomerase, i.e., human telomerase RNA (hTERC), telomerase-associated protein (TEP1), and the human telomerase reverse transcriptase (hTERT). Telomerase is expressed at high levels in the nucleus of proliferating cells, lymphocytes, primary tumors and cancer cell lines.

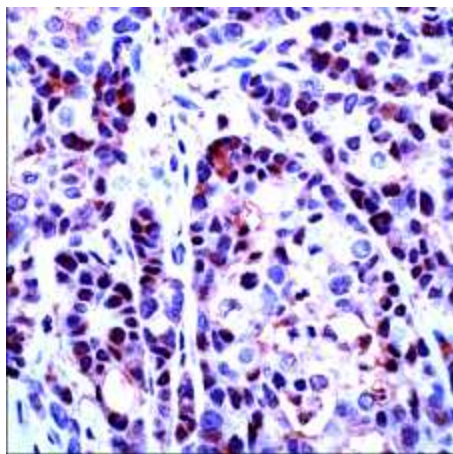


[View online »](#)

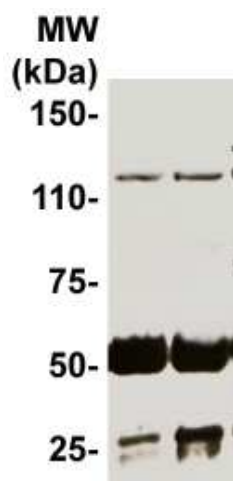
Synonyms: CMM9; DKCA2; DKCB4; EST2; hEST2; hTRT; PFBMFT1; TCS1; TP2; TRT

Protein Families: Druggable Genome

Product images:



IHC: Human breast cancer stained with Rabbit anti-Telomerase antibody at 1:100 for 30 min, RT. Staining of formalin-fixed tissues requires boiling tissue section in 10 mM Citrate Buffer, pH 6.0 for 10 min followed by cooling at RT for 20 min.



IP: 5 mg of the total protein derived from the cell lysate of 3T3 (left lane) and MCF-7 (right lane) were immunoprecipitated by 5 ug of the Rabbit anti-Telomerase antibody, extract and separated onto 7.5% SDS-PAGE, transferred onto NC membrane and followed by immunoblotting of the same primary antibody at 1:1000. An immunoreactive bands was observed around ~127 kDa. (50kDa and are light and heavy chains respectively).