

Product datasheet for **TA354458**

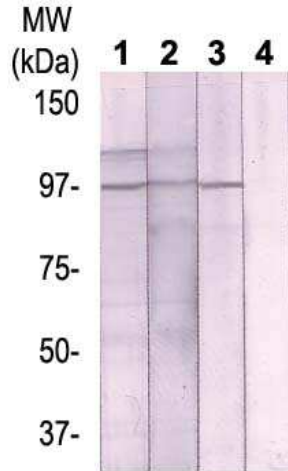
BCAR3 Rabbit Polyclonal Antibody

Product data:

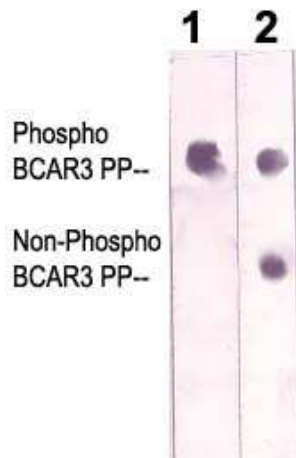
Product Type:	Primary Antibodies
Applications:	Dot, WB
Recommended Dilution:	WB 0.1-1 µg/ml ELISA 0.01-0.1 µg/ml IP 2-5 µg/ml IHC 2-10 µg/ml FC 5-10 µg/ml
Reactivity:	Human, Rat, Mouse
Host:	Rabbit
Isotype:	IgG
Clonality:	Polyclonal
Immunogen:	A synthetic peptide surrounding of -DRTPE- of human BCAR3 protein WITHOUT any phosphorylation site. This sequence is identical to human, rat, mouse, canis and bovine.
Formulation:	This affinity purified antibody is supplied in sterile Tris-buffered saline (pH7.2) containing antibody stabilizer.
Purification:	The Rabbit IgG is purified by Epitope Affinity Purification
Conjugation:	Unconjugated
Storage:	Store at -20°C as received.
Stability:	Stable for 12 months from date of receipt.
Predicted Protein Size:	93 kDa
Gene Name:	breast cancer anti-estrogen resistance 3
Database Link:	NP_001248337 Entrez Gene 29815 Mouse Entrez Gene 310838 Rat Entrez Gene 8412 Human O75815
Background:	A synthetic peptide surrounding of -DRTPE- of human BCAR3 protein WITHOUT any phosphorylation site. This sequence is identical to human, rat, mouse, canis and bovine.
Synonyms:	NSP2; SH2D3B
Protein Families:	Druggable Genome



[View online »](#)

Product images:


WB: The cell lysate derived from FBS-replenished HeLa was immunoblotted by the following antibodies at 1:500: Lane 1:Rabbit anti-BCAR3 (pT130) Lane 2:Rabbit anti-BCAR3 (Paired T130) Lane 3:Rabbit anti-BCAR3 Lane 4: Negative control (Rabbit IgG). An immunoreactive band is observed at ~93 kDa.



DB: The Phosphorylated peptide BCAR3 at Thr130 and non phosphorylated peptide were blotted onto NC membrane at 1 ug/dot, and immunoblotted by the following antibodies: Lane 1:Rabbit anti-BCAR3 (pT130) Lane 2:Rabbit anti-BCAR3 (Paired T130)