

Product datasheet for **TA354452**

PAK4 Rabbit Polyclonal Antibody

Product data:

Product Type:	Primary Antibodies
Applications:	WB
Recommended Dilution:	WB 0.1-1 µg/ml ELISA 0.01-0.1 µg/ml IP 2-5 µg/ml IHC 2-10 µg/ml FC 5-10 µg/ml
Reactivity:	Human, Mouse, Rat
Host:	Rabbit
Isotype:	IgG
Clonality:	Polyclonal
Immunogen:	A synthetic peptide surrounding the epitope RKSLV-with a phosphorylation at Serine 474 of human PAK4. This sequence is also identical within human, rat, mouse, chicken, bovine and dog species.
Formulation:	This affinity purified antibody is supplied in sterile Tris-buffered saline (pH7.2) containing antibody stabilizer.
Purification:	The Rabbit IgG is purified by site-modified Epitope Affinity Purification.
Conjugation:	Unconjugated
Storage:	Store at -20°C as received.
Stability:	Stable for 12 months from date of receipt.
Predicted Protein Size:	68 kDa
Gene Name:	p21 (RAC1) activated kinase 4
Database Link:	NP_001014831 Entrez Gene 70584 MouseEntrez Gene 292756 RatEntrez Gene 10298 Human O96013
Background:	p21-activated protein kinase (PAK) serine/threonine kinases are important effectors of Rho family GTPases and have been implicated in the regulation of cell morphology and motility, as well as in cell transformation. The phosphorylation of serine 474 as the likely autophosphorylation site in the kinase domain of PAK4 occurs in vivo. PAK4 is frequently over-expressed in human tumor cell lines of various tissue origins, indicates that the phosphorylation of PAK4 is required in oncogenic transformation and Ras-driven, anchorage-independent growth.



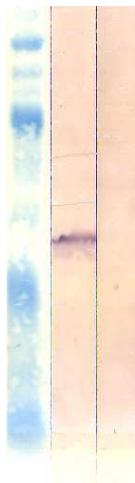
[View online »](#)

Synonyms: effector for Cdc42Hs; p21 protein (Cdc42; p21(CDKN1A)-activated kinase 4; p21-activated kinase 4; protein kinase related to *S. cerevisiae* STE20; Rac)-activated kinase 4

Protein Families: Druggable Genome, Protein Kinase

Protein Pathways: Axon guidance, ErbB signaling pathway, Focal adhesion, Regulation of actin cytoskeleton, Renal cell carcinoma, T cell receptor signaling pathway

Product images:



WB: The cell lysate derived from HEK293 cells was immunoprobed by Rabbit anti-PAK4 (pS474) antibody at 1:500. An immunoreactive band is observed around ~68kDa (lane 1). This band is blocked by pre-incubation with immunizing peptide (Lane 2)