

Product datasheet for **TA354435**

ADAM10 Rabbit Polyclonal Antibody

Product data:

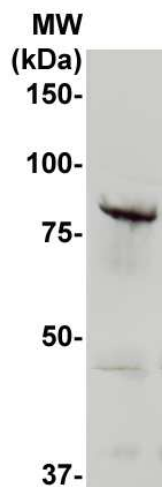
Product Type:	Primary Antibodies
Applications:	WB
Recommended Dilution:	WB 0.1-1 µg/ml ELISA 0.01-0.1 µg/ml IP 2-5 µg/ml IHC 2-10 µg/ml FC 5-10 µg/ml
Reactivity:	Human
Host:	Rabbit
Isotype:	IgG
Clonality:	Polyclonal
Immunogen:	A synthetic peptide corresponding to the C-terminus of ADAM10 protein from human, mouse and rat origins.
Formulation:	This affinity purified antibody is supplied in sterile Phosphate buffered saline (pH7.2) containing antibody stabilizer.
Purification:	The Rabbit IgG is purified by Epitope Affinity Purification
Conjugation:	Unconjugated
Storage:	Store at -20°C as received.
Stability:	Stable for 12 months from date of receipt.
Predicted Protein Size:	82 kDa
Gene Name:	ADAM metallopeptidase domain 10
Database Link:	NP_001101 Entrez Gene 102 Human O14672
Background:	ADAM10 is a member of the ADAM (A Disintegrin And Metalloprotease) family of membrane-anchored glycoproteins comprised of several distinct protein modules, including a pro- and metalloprotease domain, disintegrin domain, cysteine-rich region and an EGF repeat. These proteases perform essential functions in cell adhesion and fusion in diverse systems and participate in ectodomain shedding of molecules such as TNF-α and Drosophila signaling molecule Notch.
Synonyms:	AD10; AD18; CD156c; HsT18717; kuz; MADM; RAK
Protein Families:	Druggable Genome, Protease, Transmembrane



[View online »](#)

Protein Pathways: Alzheimer's disease, Epithelial cell signaling in Helicobacter pylori infection

Product images:



WB: The Cell lysate derived from human leukemia cells Reh was immunoprobed by Rabbit anti-ADAM10 antibody at 1:500. An immunoreactive band is observed around ~.