

Product datasheet for **TA354433**

STAT5B Rabbit Polyclonal Antibody

Product data:

Product Type:	Primary Antibodies
Applications:	IHC, WB
Recommended Dilution:	WB 0.1-1 µg/ml ELISA 0.01-0.1 µg/ml IP 2-5 µg/ml IHC 2-10 µg/ml FC 5-10 µg/ml
Reactivity:	Human, Mouse, Rat
Host:	Rabbit
Isotype:	IgG
Clonality:	Polyclonal
Immunogen:	A synthetic peptide surrounding to the epitope -DGYVK-- with phosphorylation sites at Tyr694 of STAT5 protein from human, mouse and rat origins.
Formulation:	This affinity purified antibody is supplied in sterile Tris-buffered saline (pH7.2) containing antibody stabilizer.
Purification:	The Rabbit IgG is purified by site-modified Epitope Affinity Purification.
Conjugation:	Unconjugated
Storage:	Store at -20°C as received.
Stability:	Stable for 12 months from date of receipt.
Predicted Protein Size:	92 kDa
Gene Name:	signal transducer and activator of transcription 5B
Database Link:	NP_036580 Entrez Gene 20851 Mouse Entrez Gene 25126 Rat Entrez Gene 6777 Human P51692
Background:	STAT proteins (Signal transducer and activator of transcription) belong to a family of cytoplasmic transcription factors that can be phosphorylated by a ligand binding to its cell surface receptor. STAT5 is tyrosine phosphorylated in response to IL-2, IL-3, IL-7, IL-15, GM-CSF, growth hormone, prolactin, erythropoietin and thrombopoietin. Serine phosphorylation is also required for maximal transcriptional activity. NCoA-1/SRC-1 acts as a co-activator for both the a- and b-isoforms of STAT5.
Synonyms:	STAT5


[View online »](#)

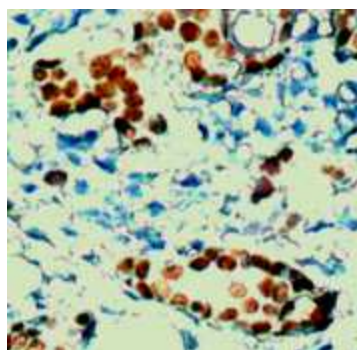
Protein Families: Druggable Genome, ES Cell Differentiation/IPS, Stem cell relevant signaling - JAK/STAT signaling pathway, Transcription Factors

Protein Pathways: Acute myeloid leukemia, Chemokine signaling pathway, Chronic myeloid leukemia, ErbB signaling pathway, Jak-STAT signaling pathway, Pathways in cancer

Product images:



WB: The tissue lysate derived from GH stimulated mouse liver was immunoblotted by Rabbit anti-STAT5 (pY694) antibody at 1:500 (lane 1). Lane 2 is a negative control.



IHC: Human breast carcinoma tissue stained with Anti-STAT5 (pY694) antibody at 1:100 for 10 min at RT. Staining of formalin-fixed tissue requires boiling tissue sections in 10 mM Citrate Buffer, pH 6.0 for 10 min followed by cooling at RT for 20 min.