

Product datasheet for **TA354430**

MTA2 Rabbit Polyclonal Antibody

Product data:

Product Type:	Primary Antibodies
Applications:	WB
Recommended Dilution:	WB 0.1-1 µg/ml ELISA 0.01-0.1 µg/ml IP 2-5 µg/ml IHC 2-10 µg/ml FC 5-10 µg/ml
Reactivity:	Human, Mouse, Rat
Host:	Rabbit
Isotype:	IgG
Clonality:	Polyclonal
Immunogen:	A synthetic peptide corresponding to the epitope -EDR-S-KSAP- with a phosphorylated Ser 345 of human PKC.
Formulation:	This affinity purified antibody is supplied in sterile Tris-buffered saline (pH7.2) containing antibody stabilizer.
Purification:	The Rabbit IgG is purified by site-modified Epitope Affinity Purification.
Conjugation:	Unconjugated
Storage:	Store at -20°C as received.
Stability:	Stable for 12 months from date of receipt.
Predicted Protein Size:	~90 kDa
Gene Name:	metastasis associated 1 family member 2
Database Link:	NP_001317221 Entrez Gene 23942 Mouse Entrez Gene 361724 Rat Entrez Gene 9219 Human O94776
Background:	Protein kinase C (PKC) is a family of serine- and threonine-specific protein kinases that can be activated by calcium and the second messenger diacylglycerol. PKC family members phosphorylate a wide variety of protein targets and are known to be involved in diverse cellular signaling pathways. With cytotoxic dose (100 µM) of anticancer drug, cisdiamminedichloroplatinum(II) (CDDP) incubation, the phosphorylation and translocation into nuclear of PKC in cancer cells including SKBR-3 which express different PKC isoforms was found. Overexpression of PKC was reported in several hemopoietic cell lines and tumors. PKC-epsilon was considered as a full oncogenic potential.

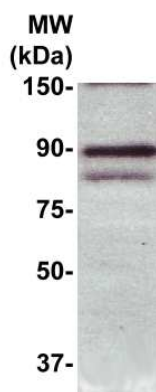


[View online »](#)

Synonyms: MTA1L1; PID

Protein Families: Druggable Genome, Transcription Factors

Product images:



WB: The SKBR-3 cells was cultured with 100 μM CDDP for 3 hours, harvest, lysed and ran onto 7.5% SDS-PAGE, transferred onto NC membranes. Then followed by immunoblotting with the Rabbit anti-Phospho-PKC (pS345) at 1:500. An immunoreactive bands was observed around ~90 kDa.