

Product datasheet for **TA354429**

Prkcb Rabbit Polyclonal Antibody

Product data:

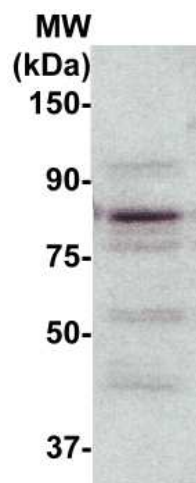
Product Type:	Primary Antibodies
Applications:	WB
Recommended Dilution:	WB 0.1-1 µg/ml ELISA 0.01-0.1 µg/ml IP 2-5 µg/ml IHC 2-10 µg/ml FC 5-10 µg/ml
Reactivity:	Human, Mouse, Rat
Host:	Rabbit
Isotype:	IgG
Clonality:	Polyclonal
Immunogen:	A synthetic peptide corresponding to C-term of human PKC beta. This sequence is identical to mouse and rat.
Formulation:	This affinity purified antibody is supplied in sterile Phosphate buffered saline (pH7.2) containing antibody stabilizer.
Purification:	The Rabbit IgG is purified by Epitope Affinity Purification
Conjugation:	Unconjugated
Storage:	Store at -20°C as received.
Stability:	Stable for 12 months from date of receipt.
Predicted Protein Size:	~80 kDa
Gene Name:	protein kinase C, beta
Database Link:	NP_032881 Entrez Gene 5579 Human Entrez Gene 25023 Rat Entrez Gene 18751 Mouse P68404
Background:	Protein kinase C (PKC) is a family of serine- and threonine-specific protein kinases that can be activated by calcium and the second messenger diacylglycerol. PKC family members phosphorylate a wide variety of protein targets and are known to be involved in diverse cellular signaling pathways. PKC-mediated control of these transitions can be negative or positive, depending on the timing of PKC activation during the cell cycle and on the specific PKC isozymes involved. There have been at least 12 different PKC isoforms identified in humans to date, including alpha, beta I, beta II, gamma, delta, epsilon, zeta, eta, theta, iota, lambda, and mu. This antibody recognize PKC beta.



[View online »](#)

Synonyms: MGC41878; PKC-B; PKC-beta; PKCB; PRKCB1; PRKCB2

Product images:



WB: The cell lysate derived from SKBR-3 was immunoblotted by the Rabbit anti-PKC-beta antibody at 1:500. An immunoreactive bands was observed around ~80 kDa.