

Product datasheet for **TA354406**

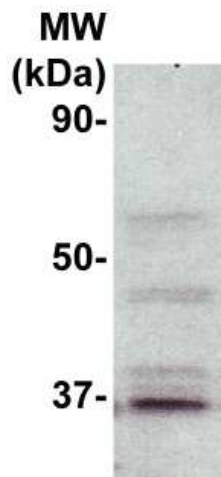
MYD88 Rabbit Polyclonal Antibody

Product data:

Product Type:	Primary Antibodies
Applications:	WB
Recommended Dilution:	WB 0.1-1 µg/ml ELISA 0.01-0.1 µg/ml IP 2-5 µg/ml IHC 2-10 µg/ml FC 5-10 µg/ml
Reactivity:	Human, Mouse, Rat
Host:	Rabbit
Isotype:	IgG
Clonality:	Polyclonal
Immunogen:	A synthetic peptide corresponding to the C-terminus of human MyD88. This sequence is identical among human, rat, mouse.
Formulation:	This affinity purified antibody is supplied in sterile Phosphate buffered saline (pH7.2) containing antibody stabilizer.
Purification:	The Rabbit IgG is purified by Epitope Affinity Purification
Conjugation:	Unconjugated
Storage:	Store at -20°C as received.
Stability:	Stable for 12 months from date of receipt.
Predicted Protein Size:	34 kDa
Gene Name:	myeloid differentiation primary response 88
Database Link:	NP_001166037 Entrez Gene 17874 Mouse Entrez Gene 301059 Rat Entrez Gene 4615 Human Q99836
Synonyms:	MYD88D
Protein Families:	Druggable Genome
Protein Pathways:	Apoptosis, Toll-like receptor signaling pathway



[View online »](#)

Product images:

WB: The whole cell lysates derived from K562 were immunoblotted by Rabbit anti-MyD88 antibody at 1:500. An immunoreactive band around 34 kDa was observed.