

Product datasheet for **TA354401**

CD72 Rabbit Polyclonal Antibody

Product data:

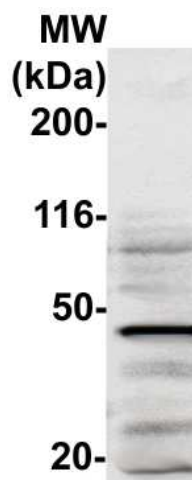
Product Type:	Primary Antibodies
Applications:	WB
Recommended Dilution:	WB 0.1-1 µg/ml ELISA 0.01-0.1 µg/ml IP 2-5 µg/ml IHC 2-10 µg/ml FC 5-10 µg/ml
Reactivity:	Human
Host:	Rabbit
Isotype:	IgG
Clonality:	Polyclonal
Immunogen:	A synthetic peptide corresponding to N-term of human CD72 protein. This sequence is identical to mouse and rat.
Formulation:	This affinity purified antibody is supplied in sterile Phosphate buffered saline (pH7.2) containing antibody stabilizer.
Purification:	The Rabbit IgG is purified by Epitope Affinity Purification
Conjugation:	Unconjugated
Storage:	Store at -20°C as received.
Stability:	Stable for 12 months from date of receipt.
Predicted Protein Size:	45 kDa
Gene Name:	CD72 molecule
Database Link:	NP_001773 Entrez Gene 971 Human P21854
Background:	CD72 antigen is a member of the type II integral membrane glycoproteins which includes other related cell surface molecules such as the asialoglycoprotein receptors, CD23 and the Kupffer cell receptor. The function of CD72 is unknown but the exposure of B cells to CD72 antibodies activates a variety of signaling pathways and can induce MHC class II expression and B cell proliferation. CD72 antigen is expressed on all cells of B cell lineage with the exception of plasma cells and weakly on human tissue macrophages.
Synonyms:	CD72b; LYB2
Protein Families:	Adult stem cells, Druggable Genome, ES Cell Differentiation/IPS, Transmembrane



[View online »](#)

Protein Pathways: B cell receptor signaling pathway

Product images:



WB: The cell lysate derived from Raji was immunoblotted by the Rabbit anti-CD72 antibody at 1:500. An immunoreactive bands was observed around 45kDa.