

## Product datasheet for **TA354387**

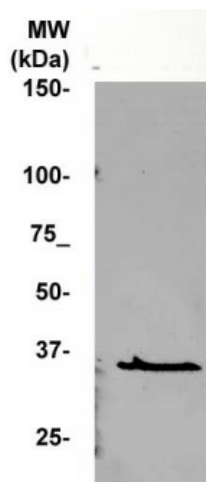
### Cyclin C (CCNC) Rabbit Polyclonal Antibody

#### Product data:

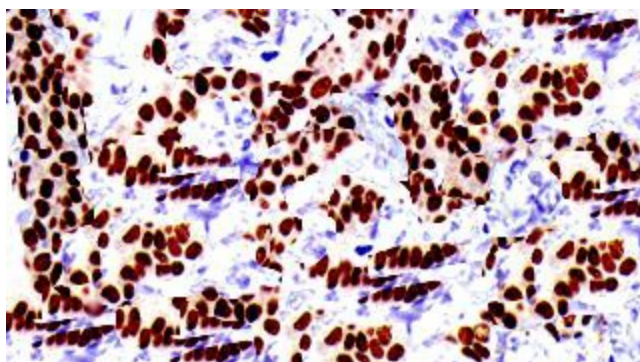
Product Type:	Primary Antibodies
Applications:	IHC, WB
Recommended Dilution:	WB 0.1-1 µg/ml ELISA 0.01-0.1 µg/ml IP 2-5 µg/ml IHC 2-10 µg/ml FC 5-10 µg/ml
Reactivity:	Human, Mouse, Rat, Dog
Host:	Rabbit
Isotype:	IgG
Clonality:	Polyclonal
Immunogen:	A synthetic peptide corresponding to the C-terminus of human Cyclin C protein.
Formulation:	This affinity purified antibody is supplied in sterile Phosphate buffered saline (pH7.2) containing antibody stabilizer.
Purification:	The Rabbit IgG is purified by Epitope Affinity Purification
Conjugation:	Unconjugated
Storage:	Store at -20°C as received.
Stability:	Stable for 12 months from date of receipt.
Predicted Protein Size:	34 kDa
Gene Name:	cyclin C
Database Link:	<a href="#">NP_001013417</a> <a href="#">Entrez Gene 51813 Mouse</a> <a href="#">Entrez Gene 114839 Rat</a> <a href="#">Entrez Gene 475007 Dog</a> <a href="#">Entrez Gene 892 Human</a> <a href="#">P24863</a>
Synonyms:	CycC
Protein Families:	Druggable Genome, Transcription Factors



[View online »](#)

**Product images:**

WB: The cell lysate derived from MCF-7 was immuno-blotted by Rabbit anti-Cyclin C antibody at 1:500. An immunoreactive band around 34kDa is observed.



IHC: Human breast carcinoma tissue was stained with Rabbit anti-Cyclin C antibody at 1:100 for 10 min at RT. Staining of formalin-fixed tissue requires boiling tissue sections in 10 mM Citrate Buffer, pH 6.0 for 10 min followed by cooling at RT for 20 min.