

## Product datasheet for **TA354369**

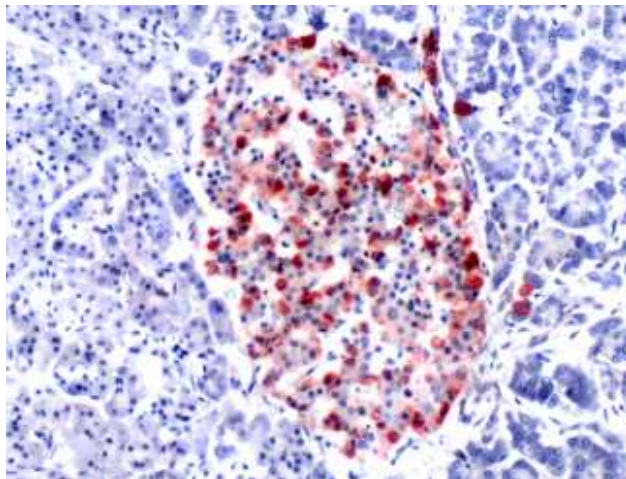
### GLP1 (GCG) Rabbit Polyclonal Antibody

#### Product data:

Product Type:	Primary Antibodies
Applications:	IHC
Recommended Dilution:	WB 0.1-1 µg/ml ELISA 0.01-0.1 µg/ml IP 2-5 µg/ml IHC 2-10 µg/ml FC 5-10 µg/ml
Reactivity:	Human, Mouse, Rat
Host:	Rabbit
Isotype:	IgG
Clonality:	Polyclonal
Immunogen:	A synthetic peptide corresponding to the human Glucagon conjugated to carrier protein.
Formulation:	This affinity purified antibody is supplied in sterile Phosphate buffered saline (pH7.2) containing antibody stabilizer.
Purification:	The Rabbit IgG is purified by Epitope Affinity Purification
Conjugation:	Unconjugated
Storage:	Store at -20°C as received.
Stability:	Stable for 12 months from date of receipt.
Predicted Protein Size:	~4 kDa (or ~20 kDa)
Gene Name:	glucagon
Database Link:	<a href="#">NP_002045</a> <a href="#">Entrez Gene 14526 Mouse</a> <a href="#">Entrez Gene 24952 Rat</a> <a href="#">Entrez Gene 2641 Human</a> <a href="#">P01275</a>
Background:	Glucagon is a 29 amino acids polypeptide hormone that is secreted by alpha cells in the islets of Langerhans of endocrine portion of the pancreas. Glucagon antagonizes insulin by converting glycogen to glucose in the liver and increasing blood sugar levels. Glucagon-like peptide 1 (GLP1), glucagon-like peptide 2 (GLP2), VIP (Vaso-active intestinal peptide) and PACAP (pituitary adenylate cyclase activating polypeptide) are in the glucagons hormone family. GLP1 is a transmitter in the central nervous system that regulates feeding and drinking behavior. GLP2 stimulates intestinal epithelial growth.
Synonyms:	GLP1; GLP2; GRPP
Protein Families:	Druggable Genome, ES Cell Differentiation/IPS, Secreted Protein



[View online »](#)

**Product images:**

IHC: Human pancreatic tissue was stained with Anti-Glucagon antibody, at 1:100 for 30 min at RT. Staining of formalin-fixed tissue requires boiling tissue sections in 10 mM Citrate Buffer, pH 6.0 for 10 min followed by cooling at RT for 20 min.