

## Product datasheet for **TA354368**

### alpha Tubulin (TUBA1A) Mouse Monoclonal Antibody

#### Product data:

Product Type:	Primary Antibodies
Applications:	IHC
Recommended Dilution:	WB 0.1-1 µg/ml ELISA 0.01-0.1 µg/ml IP 2-5 µg/ml IHC 2-10 µg/ml FC 5-10 µg/ml
Reactivity:	Human, Mouse, Rat
Host:	Mouse
Isotype:	IgG1
Clonality:	Monoclonal
Immunogen:	A recombinant protein of human Tubulin.
Formulation:	This affinity purified antibody is supplied in sterile Phosphate buffered saline (pH7.2) containing antibody stabilizer.
Purification:	The mouse IgG is purified by Protein A-Affinity Chromatography according to Isotyping
Conjugation:	Unconjugated
Storage:	Store at -20°C as received.
Stability:	Stable for 12 months from date of receipt.
Predicted Protein Size:	50 kDa
Gene Name:	tubulin alpha 1a
Database Link:	<a href="#">NP_001257329</a> <a href="#">Entrez Gene 22142 Mouse</a> <a href="#">Entrez Gene 64158 Rat</a> <a href="#">Entrez Gene 7846 Human</a> <a href="#">Q71U36</a>



[View online »](#)

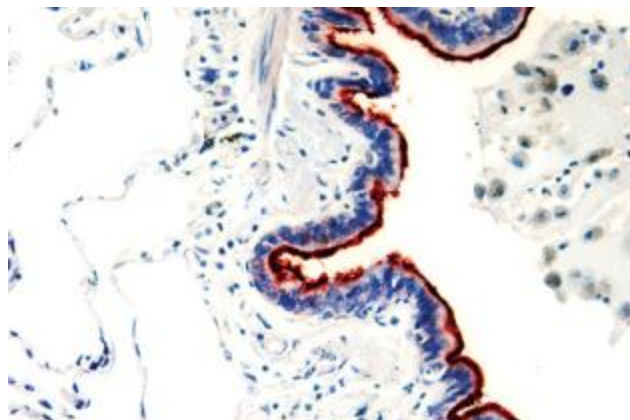
**Background:** Tubulin is the major building block of microtubules which is essential in cell structures, transportation and mitosis. This superfamily is composed of six distinct families. Alpha, beta, and gamma tubulin families are found in all eukaryotes. The alpha and beta tubulins represent the major components of microtubules, while gamma tubulin plays a critical role in the nucleation of microtubule assembly. There are multiple alpha and beta tubulin genes, which are highly conserved among species. The abundance of Gamma tubulin is less than 1% of the level of either alpha or beta tubulin. It shares approximately 28-32% identity with alpha tubulin from various organisms and 32-36% identity with beta tubulins. Each subunit is a 50 kDa acidic protein. The detection, localization and characterization of proteins involved in microtubule function is fundamental to the understanding of mitosis, meiosis and the microtubule cytoskeleton.

**Synonyms:** B-ALPHA-1; LIS3; TUBA3

**Protein Families:** Druggable Genome

**Protein Pathways:** Gap junction, Pathogenic Escherichia coli infection

**Product images:**



IHC: Human lung stained with Mouse anti-Tubulin-alpha antibody, at 1:100 for 30 min, RT. (Staining of formalin-fixed tissues requires boiling tissue section in 10 mM Citrate Buffer, pH 6.0 for 10 min followed by cooling at RT for 20 min.)