

Product datasheet for **TA354364**

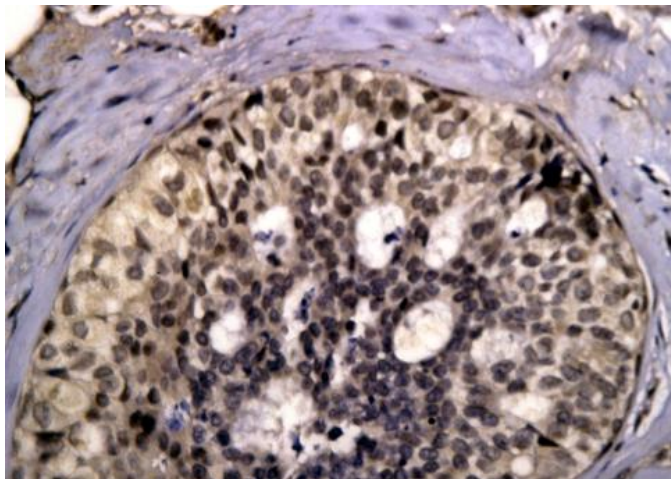
p53 (TP53) Mouse Monoclonal Antibody [Clone ID: S20]

Product data:

Product Type:	Primary Antibodies
Clone Name:	S20
Applications:	IHC
Recommended Dilution:	WB 0.1-1 µg/ml ELISA 0.01-0.1 µg/ml IP 2-5 µg/ml IHC 2-10 µg/ml FC 5-10 µg/ml
Reactivity:	Human, Mouse, Rat
Host:	Mouse
Isotype:	IgG1
Clonality:	Monoclonal
Formulation:	This affinity purified antibody is supplied in sterile Phosphate buffered saline (pH7.2) containing antibody stabilizer.
Purification:	The mouse IgG is purified by Protein A-Affinity Chromatography according to Isotyping
Conjugation:	Unconjugated
Storage:	Store at -20°C as received.
Stability:	Stable for 12 months from date of receipt.
Predicted Protein Size:	~53 kDa
Gene Name:	tumor protein p53
Database Link:	NP_000537 Entrez Gene 22059 Mouse Entrez Gene 24842 Rat Entrez Gene 7157 Human P04637
Synonyms:	BCC7; LFS1; P53; TRP53
Protein Families:	Druggable Genome, Stem cell - Pluripotency, Transcription Factors
Protein Pathways:	Amyotrophic lateral sclerosis (ALS), Apoptosis, Basal cell carcinoma, Bladder cancer, Cell cycle, Chronic myeloid leukemia, Colorectal cancer, Endometrial cancer, Glioma, Huntington's disease, MAPK signaling pathway, Melanoma, Neurotrophin signaling pathway, Non-small cell lung cancer, p53 signaling pathway, Pancreatic cancer, Pathways in cancer, Prostate cancer, Small cell lung cancer, Thyroid cancer, Wnt signaling pathway



[View online »](#)

Product images:

IHC: The human breast cancer tissue stained with Mouse anti-P53 monoclonal antibody at 1:500. (Note: formalin-fixed, paraffin-embedded sections need 15 minutes heatinduced epitope retrieval in 10 mM citrate buffer, pH 6.0, and 30 minutes incubation at room temperature with the primary antibody.)