

Product datasheet for **TA354360**

c Abl (ABL1) Mouse Monoclonal Antibody [Clone ID: SPM328]

Product data:

Product Type:	Primary Antibodies
Clone Name:	SPM328
Applications:	IHC, WB
Recommended Dilution:	WB 0.1-1 µg/ml ELISA 0.01-0.1 µg/ml IP 2-5 µg/ml IHC 2-10 µg/ml FC 5-10 µg/ml
Reactivity:	Human, Mouse
Host:	Mouse
Isotype:	IgG1
Clonality:	Monoclonal
Immunogen:	The synthetic peptide corresponding to SH2 domain of c-Abl protein.
Formulation:	This affinity purified antibody is supplied in sterile Phosphate buffered saline (pH7.2) containing antibody stabilizer.
Purification:	The mouse IgG is purified by Protein A-Affinity Chromatography according to Isotyping
Conjugation:	Unconjugated
Storage:	Store at -20°C as received.
Stability:	Stable for 12 months from date of receipt.
Predicted Protein Size:	~120 kDa
Gene Name:	ABL proto-oncogene 1, non-receptor tyrosine kinase
Database Link:	NP_005148 Entrez Gene 11350 Mouse Entrez Gene 25 Human P00519

Background: The c-Abl proto-oncogene encodes a protein tyrosine kinase that is located in the cytoplasm and nucleus. It is activated by certain DNA-damaging agents and regulates induction of the stress-activated c-Jun N-terminal protein kinase (SAPK). In chronic myelogenous leukemia and in a subset of acute lymphoblastic leukemias, the c-Abl proto-oncogene undergoes a (9;22) chromosomal translocation producing a novel rearranged chromosome (the Philadelphia chromosome) As the result of the fusion of c-Abl sequences from chromosome 9 to the Bcr gene on chromosome 22. The molecular consequence of this translocation is the generation of a chimeric Bcr/Abl mRNA encoding activated Abl protein tyrosine kinase.



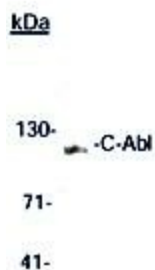
[View online »](#)

Synonyms: ABL; abl; bcr; c-ABL; c-ABL1; JTK7; p150; v-abl

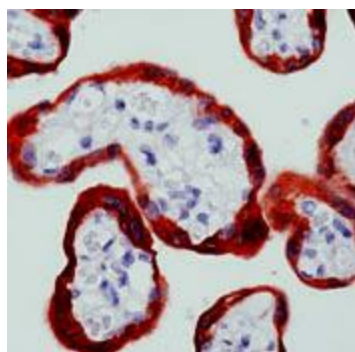
Protein Families: Druggable Genome, Protein Kinase, Transcription Factors

Protein Pathways: Axon guidance, Cell cycle, Chronic myeloid leukemia, ErbB signaling pathway, Neurotrophin signaling pathway, Pathogenic Escherichia coli infection, Pathways in cancer, Viral myocarditis

Product images:



WB: The whole cell lysate derived from HELA was separated in 10% SDS-PAGE, transferred onto NC membrane, and immunoblotted by Mouse anti-C-Abl antibody at 1:500. An immunoreactive band around 120 kDa was observed.



IHC: The human Placenta stained with Mouse anti-c-Abl monoclonal antibody at 1:100. (Note: formalin-fixed, paraffin-embedded sections need 15 minutes heat-induced epitope retrieval in 10 mM citrate buffer, pH 6.0, and 30 minutes incubation at room temperature with the primary antibody.)