

Product datasheet for **TA354359**

beta V Tubulin (TUBB) Mouse Monoclonal Antibody

Product data:

Product Type:	Primary Antibodies
Applications:	IHC, WB
Recommended Dilution:	WB 0.1-1 µg/ml ELISA 0.01-0.1 µg/ml IP 2-5 µg/ml IHC 2-10 µg/ml FC 5-10 µg/ml
Reactivity:	Human, Mouse, Rat
Host:	Mouse
Isotype:	IgG1
Clonality:	Monoclonal
Immunogen:	A synthetic peptide derived from Internal sequence of Tubulin beta protein. This sequence is identical to human, mouse, rat, chicken and dog species.
Formulation:	This affinity purified antibody is supplied in sterile Phosphate buffered saline (pH7.2) containing antibody stabilizer.
Purification:	The mouse IgG is purified by Protein A-Affinity Chromatography according to Isotyping
Conjugation:	Unconjugated
Storage:	Store at -20°C as received.
Stability:	Stable for 12 months from date of receipt.
Predicted Protein Size:	55 kDa
Gene Name:	tubulin beta class I
Database Link:	NP_001280141 Entrez Gene 203068 Human P07437



[View online »](#)

Background:

Tubulin is the major building block of microtubules which is essential in cell structures, transportation and mitosis. This superfamily is composed of six distinct families. Alpha, beta, and gamma tubulin families are found in all eukaryotes. The alpha and beta tubulins represent the major components of microtubules, while gamma tubulin plays a critical role in the nucleation of microtubule assembly. There are multiple alpha and beta tubulin genes, which are highly conserved among species. The abundance of Gamma tubulin is less than 1% of the level of either alpha or beta tubulin. It shares approximately 28-32% identity with alpha tubulin from various organisms and 32-36% identity with beta tubulins. The detection, localization and characterization of proteins involved in microtubule function is fundamental to the understanding of mitosis, meiosis and the microtubule cytoskeleton.

Synonyms:

CDCBM6; CSCSC1; M40; OK; SW-cl.56; TUBB1; TUBB5

Protein Families:

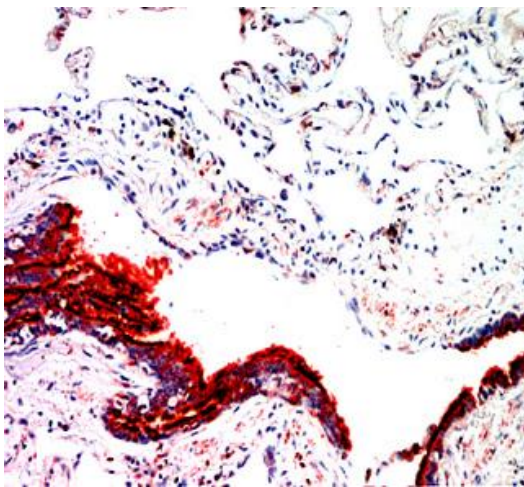
Druggable Genome

Protein Pathways:

Gap junction, Pathogenic Escherichia coli infection

Product images:

WB: Cell lysate from A431 (Lane 1) and Hela (Lane 2) was resolved onto 12% SDS-PAGE and transferred onto NC Membrane, then probed by Mouse anti-Tubulin beta antibody, at 1:500. An immune-reactive band ~ 55 kDa is observed.



IHC: Human lung tissue stained with Mouse anti-Tubulin-beta antibody, at 1:25 for 10 min at RT. Staining of formalin-fixed tissue requires boiling tissue sections in 10 mM Citrate Buffer, pH 6.0 for 10 min followed by cooling at RT for 20 min.