

Product datasheet for **TA354356**

Claudin 12 (CLDN12) Rabbit Polyclonal Antibody

Product data:

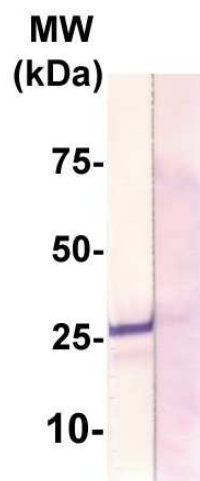
Product Type:	Primary Antibodies
Applications:	WB
Recommended Dilution:	WB 0.1-1 µg/ml ELISA 0.01-0.1 µg/ml IP 2-5 µg/ml IHC 2-10 µg/ml FC 5-10 µg/ml
Reactivity:	Human
Host:	Rabbit
Isotype:	IgG
Clonality:	Polyclonal
Immunogen:	A synthetic peptide from C-terminus of human claudin 12 protein. This sequence is identical to human, rat, mouse and bovine.
Formulation:	This affinity purified antibody is supplied in sterile Phosphate buffered saline (pH7.2) containing antibody stabilizer.
Purification:	The Rabbit IgG is purified by Epitope Affinity Purification
Conjugation:	Unconjugated
Storage:	Store at -20°C as received.
Stability:	Stable for 12 months from date of receipt.
Predicted Protein Size:	27 kDa
Gene Name:	claudin 12
Database Link:	NP_001172001 Entrez Gene 9069 Human P56749
Background:	The claudin superfamily consists of many structurally related proteins in humans. These proteins, which include claudin 1 through 18, are important structural and functional components of tight junctions in paracellular transport. Claudins are located in both epithelial and endothelial cells in all tight junction-bearing tissues. Claudins, which consist of four trans-membrane domains and two extracellular loops, make up tight junction strands. Claudin 12 is 244 aa residues. It is expressed in the inner ear and bladder epithelium, and it is over-expressed in colorectal carcinomas.
Synonyms:	OTTHUMP00000067944



[View online »](#)

Protein Families: Transmembrane

Product images:



WB: The whole tissue lysates derived from 100%confluent MCF7 were immunoblotted by Rabbit anti-Claudin 12 antibody at 1:500 (left Lane). The immunoreactive band is blocked by preincubation of immunizing peptide (right Lane 2)