

Product datasheet for **TA354352**

CD68 Mouse Monoclonal Antibody [Clone ID: SPM281]

Product data:

Product Type:	Primary Antibodies
Clone Name:	SPM281
Applications:	IHC
Recommended Dilution:	WB 0.1-1 µg/ml ELISA 0.01-0.1 µg/ml IP 2-5 µg/ml IHC 2-10 µg/ml FC 5-10 µg/ml
Reactivity:	Human, Mouse, Rat
Host:	Mouse
Isotype:	IgG1
Clonality:	Monoclonal
Immunogen:	Subcellular fraction of human alveolar macrophages
Formulation:	This affinity purified antibody is supplied in sterile Phosphate buffered saline (pH7.2) containing antibody stabilizer.
Purification:	The mouse IgG is purified by Protein A-Affinity Chromatography according to Isotyping
Conjugation:	Unconjugated
Storage:	Store at -20°C as received.
Stability:	Stable for 12 months from date of receipt.
Predicted Protein Size:	110 kDa
Gene Name:	CD68 molecule
Database Link:	NP_001035148 Entrez Gene 12514 Mouse Entrez Gene 287435 Rat Entrez Gene 968 Human P34810



[View online »](#)

Background:

CD68 is an intracellular glycoprotein expressed on macrophages and monocytes. CD68 expression has been demonstrated in T cells, NK cells, liver and renal tubules. This antibody is important for identifying macrophages in tissue sections. It stains macrophages in a wide variety of human tissues, including Kupffer cells and macrophages in the red pulp of the spleen, in lamina propria of the gut, in lung alveoli, and in bone marrow. It reacts with myeloid precursors and peripheral blood granulocytes. It also reacts with plasmacytoid T cells which are supposed to be of monocyte/macrophage origin. It shows strong granular cytoplasmic staining of chronic and acute myeloid leukemia and also reacts with rare cases of true histiocytic neoplasia. Tumors of lymphoid origin are usually not stained.

Synonyms:

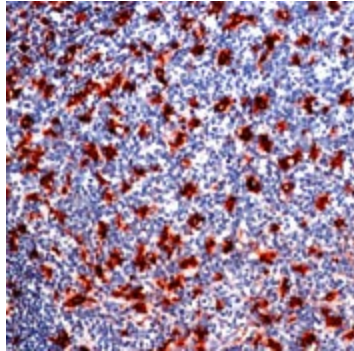
GP110; LAMP4; SCARD1

Protein Families:

Druggable Genome, Transmembrane

Protein Pathways:

Lysosome

Product images:

IHC: Human Tonsil tissue stained with Anti-CD68 antibody, at 1:100 for 10 min at RT. Staining of formalin-fixed tissue requires boiling tissue sections in 10 mM Citrate Buffer, pH 6.0 for 10 min followed by cooling at RT for 20 min.