

Product datasheet for **TA354344**

Insulin Receptor (INSR) Mouse Monoclonal Antibody

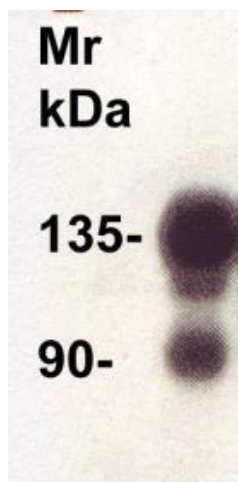
Product data:

Product Type:	Primary Antibodies
Applications:	WB
Recommended Dilution:	WB 0.1-1 µg/ml ELISA 0.01-0.1 µg/ml IP 2-5 µg/ml IHC 2-10 µg/ml FC 5-10 µg/ml
Reactivity:	Human
Host:	Mouse
Isotype:	IgG1
Clonality:	Monoclonal
Immunogen:	Highly purified human placental Insulin Receptor.
Formulation:	This affinity purified antibody is supplied in sterile Phosphate buffered saline (pH7.2) containing antibody stabilizer.
Purification:	The mouse IgG is purified by Protein A-Affinity Chromatography according to Isotyping
Conjugation:	Unconjugated
Storage:	Store at -20°C as received.
Stability:	Stable for 12 months from date of receipt.
Predicted Protein Size:	~135 kDa
Gene Name:	insulin receptor
Database Link:	NP_000199 Entrez Gene 3643 Human P06213
Background:	The human insulin receptor is a heterotetrametric membrane glycoprotein consisting of disulfide-linked subunits in a β -a-a- β Configuration. The beta-subunit (95kDa) possesses a single transmembrane domain, whereas the alpha subunit (135kDa) is completely extracellular.
Synonyms:	CD220; HHF5
Protein Families:	Druggable Genome, Protein Kinase, Transmembrane
Protein Pathways:	Adherens junction, Insulin signaling pathway, Type II diabetes mellitus



[View online »](#)

Product images:



WB: The cell lysate derived from Human IM-9 lymphocytes (5 mg/ml) was immunoprecipitated by Mouse anti-IR-1 at 10 ug/ml. A major band around ~135 kDa is observed.