

Product datasheet for **TA354334**

MET Rabbit Polyclonal Antibody

Product data:

Product Type:	Primary Antibodies
Applications:	IHC
Recommended Dilution:	WB 0.1-1 µg/ml ELISA 0.01-0.1 µg/ml IP 2-5 µg/ml IHC 2-10 µg/ml FC Not tested
Reactivity:	Human
Host:	Rabbit
Isotype:	IgG
Clonality:	Polyclonal
Immunogen:	A synthetic peptide from C-terminus of human c-Met protein
Formulation:	This affinity purified antibody is supplied in sterile Phosphate buffered saline (pH7.2) containing antibody stabilizer.
Purification:	The Rabbit IgG is purified by Epitope Affinity Purification
Conjugation:	Unconjugated
Storage:	Store at -20°C as received.
Stability:	Stable for 12 months from date of receipt.
Predicted Protein Size:	155 kDa
Gene Name:	MET proto-oncogene, receptor tyrosine kinase
Database Link:	NP_000236 Entrez Gene 4233 Human P08581
Background:	The c-Met oncogene, a member of the tyrosine kinase superfamily, was originally isolated from chemical carcinogen-treated human osteogenic sarcoma cell line by transfection analysis in NIH/3T3 cells. The Met proto-oncogene product was identified as a transmembrane receptor-like protein with tyrosine kinase activity that is expressed in many tissues. The mature c-Met protein is a disulfide-linked heterodimer with Mw 190 kDa composed of a heavily glycosylated domain, a single transmembrane domain and a cytoplasmic tyrosine kinase domain. The c-Met gene product has been identified as the cell surface receptor for hepatocyte growth factor, a plasminogen-like protein thought to be a humoral mediator of liver regeneration.



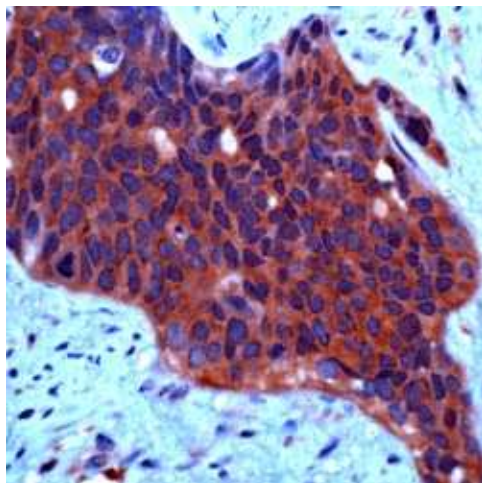
[View online »](#)

Synonyms: AUTS9; c-Met; DFNB97; HGFR; RCCP2

Protein Families: Druggable Genome, Protein Kinase, Transmembrane

Protein Pathways: Adherens junction, Axon guidance, Colorectal cancer, Cytokine-cytokine receptor interaction, Endocytosis, Epithelial cell signaling in Helicobacter pylori infection, Focal adhesion, Melanoma, Pathways in cancer, Renal cell carcinoma

Product images:



IHC: The human ovarian carcinoma tissue stained with Rabbit anti-c-Met antibody at 1:50. (Note: formalin-fixed, paraffinembedded sections need 15 minutes heat-induced epitope retrieval in 10 mM citrate buffer, pH 6.0, and 30 minutes incubation at room temperature with the primary antibody.)