

Product datasheet for **TA354330**

BCL2 Rabbit Polyclonal Antibody

Product data:

Product Type:	Primary Antibodies
Applications:	IHC, WB
Recommended Dilution:	WB 0.1-1 µg/ml ELISA 0.01-0.1 µg/ml IP 2-5 µg/ml IHC 2-10 µg/ml FC 5-10 µg/ml
Reactivity:	Human
Host:	Rabbit
Isotype:	IgG
Clonality:	Polyclonal
Immunogen:	A synthetic peptide derived from C-terminus of human BCL-2 protein. This sequence is identical in human, rat, mouse, bovine and dog.
Formulation:	This affinity purified antibody is supplied in sterile Phosphate buffered saline (pH7.2) containing antibody stabilizer.
Purification:	The Rabbit IgG is purified by Epitope Affinity Purification
Conjugation:	Unconjugated
Storage:	Store at -20°C as received.
Stability:	Stable for 12 months from date of receipt.
Predicted Protein Size:	26 kDa
Gene Name:	B-cell CLL/lymphoma 2
Database Link:	NP_000624 Entrez Gene 596 Human P10415



[View online »](#)

Background:

The Bcl-2 gene codes for a 25 kDa protein which has been implicated in the control of cell death by apoptosis, in normal tissues, expression of bcl-2 is restricted to cells and tissues that are characterized by apoptotic cell turnover. Bcl-2 protein exerts a survival function in response to a wide range of apoptotic stimuli through inhibition of mitochondrial cytochrome c release, thus it is also considered as an inner mitochondrial membrane protein which can be expressed in lymphoma and breast carcinoma cells. This protein modulates mitochondrial calcium homeostasis and proton flux. Several phosphorylation sites have been identified within Bcl-2 including Thr56, Ser70, Thr74, Ser87 and Thr127 which may be the targets of the ASK1/MKK7/JNK1 pathway, and that phosphorylation of Bcl-2 may be a marker for mitotic events. Mutation of Bcl-2 at Thr56 or Ser87 inhibits its anti-apoptotic activity during glucocorticoid-induced apoptosis of T lymphocytes. Phosphorylation of Bcl-2 at Ser70 by IL-3/JNK may be required for its enhanced antiapoptotic functions.

Synonyms:

Bcl-2; PPP1R50

Protein Families:

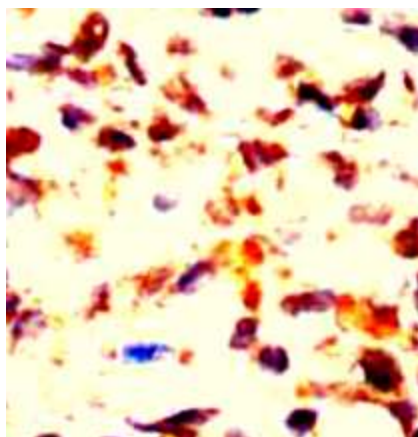
Druggable Genome, ES Cell Differentiation/IPS, Stem cell - Pluripotency, Transmembrane

Protein Pathways:

Amyotrophic lateral sclerosis (ALS), Apoptosis, Colorectal cancer, Focal adhesion, Neurotrophin signaling pathway, Pathways in cancer, Prostate cancer, Small cell lung cancer

Product images:


WB: The whole cell lysate derived from Raji cell was separated in 10% SDS-PAGE, transferred onto NC membrane, and immunoblotted by Rabbit anti-Bcl-2 antibody at 1:500. An immunoreactive band around ~26 kDa is observed.



Human Jurkat cells stained with Anti-BCL-2 antibody, at 1:200 for 10 min at RT. Staining of formalin-fixed cells requires boiling tissue sections in 10 mM Citrate Buffer, pH 6.0 for 10 min followed by cooling at RT for 20 min.