

## Product datasheet for **TA354318**

### Microsomal Glutathione S transferase 1 (MGST1) Rabbit Polyclonal Antibody

#### Product data:

Product Type:	Primary Antibodies
Applications:	WB
Recommended Dilution:	WB 0.1-1 µg/ml ELISA 0.01-0.1 µg/ml IP 2-5 µg/ml IHC 2-10 µg/ml FC 5-10 µg/ml
Host:	Rabbit
Isotype:	IgG
Clonality:	Polyclonal
Immunogen:	A full length of GST recombinant protein.
Formulation:	This affinity purified antibody is supplied in sterile Phosphate buffered saline (pH7.2) containing antibody stabilizer.
Purification:	The Rabbit IgG is purified by Epitope Affinity Purification
Conjugation:	Unconjugated
Storage:	Store at -20°C as received.
Stability:	Stable for 12 months from date of receipt.
Predicted Protein Size:	27 kDa
Gene Name:	microsomal glutathione S-transferase 1
Database Link:	<a href="#">NP_665735</a> <a href="#">Entrez Gene 4257 Human</a> <a href="#">P10620</a>
Background:	Many oligo peptides or tag proteins are widely used as a tag to monitor the protein expression, such as FLAG, c-Myc, E-tag, His-tag, GFP, GST, and etc. These tag antibodies provide tools to localize gene products in a variety of cell types to study the topology of proteins, and protein complexes, and to identify associated proteins. In addition, this antibody allows characterizing of newly identified, lowing abundance or poorly immunogenic proteins when protein specific antibodies are not available. This GST antibody can be used for pGEX expression vector for the synthesis of fusion proteins between GST and targeted protein expression in both plaques and WBs as well as for immunoaffinity purification of GST fusion proteins expressed in E. coli.
Synonyms:	GST12; MGST; MGST-I

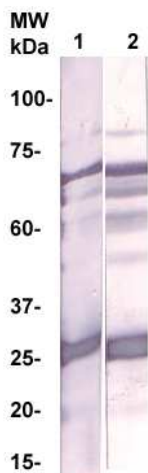


[View online »](#)

**Protein Families:** Druggable Genome, Transmembrane

**Protein Pathways:** Drug metabolism - cytochrome P450, Glutathione metabolism, Metabolism of xenobiotics by cytochrome P450

**Product images:**



WB: GST-Recombinant protein were resolved onto 10% SDS-PAGE, transferred onto NC membrane, and immunoprobed by Lane 1: Rabbit anti-GST Lane 2: Mouse anti-GST at 1:500 dilution