

Product datasheet for **TA354310**

alpha Tubulin (TUBA1A) Rabbit Polyclonal Antibody

Product data:

Product Type:	Primary Antibodies
Applications:	IHC
Recommended Dilution:	WB 0.1-1 µg/ml ELISA 0.01-0.1 µg/ml IP 2-5 µg/ml IHC 2-10 µg/ml FC 5-10 µg/ml
Reactivity:	Human, Mouse, Rat
Host:	Rabbit
Isotype:	IgG
Clonality:	Polyclonal
Immunogen:	A synthetic peptide corresponding to aa 426-450 of human tubulin. This sequence is identical among human, rat, mouse, bovine, guinea pig, gerbil, frog and chicken.
Formulation:	This affinity purified antibody is supplied in sterile Phosphate buffered saline (pH7.2) containing antibody stabilizer.
Purification:	The Rabbit IgG is purified by Epitope Affinity Purification
Conjugation:	Unconjugated
Storage:	Store at -20°C as received.
Stability:	Stable for 12 months from date of receipt.
Predicted Protein Size:	50 kDa
Gene Name:	tubulin alpha 1a
Database Link:	NP_006000 Entrez Gene 22142 Mouse Entrez Gene 64158 Rat Entrez Gene 7846 Human Q71U36



[View online »](#)

Background:

Tubulin is the major building block of microtubules which is essential in cell structures, transportation and mitosis. This superfamily is composed of six distinct families. Alpha, beta, and gamma tubulin families are found in all eukaryotes. The alpha and beta tubulins represent the major components of microtubules, while gamma tubulin plays a critical role in the nucleation of microtubule assembly. There are multiple alpha and beta tubulin genes, which are highly conserved among species. The abundance of Gamma tubulin is less than 1% of the level of either alpha or beta tubulin. It shares approximately 28-32% identity with alpha tubulin from various organisms and 32-36% identity with beta tubulins. The detection, localization and characterization of proteins involved in microtubule function is fundamental to the understanding of mitosis, meiosis and the microtubule cytoskeleton.

Synonyms:

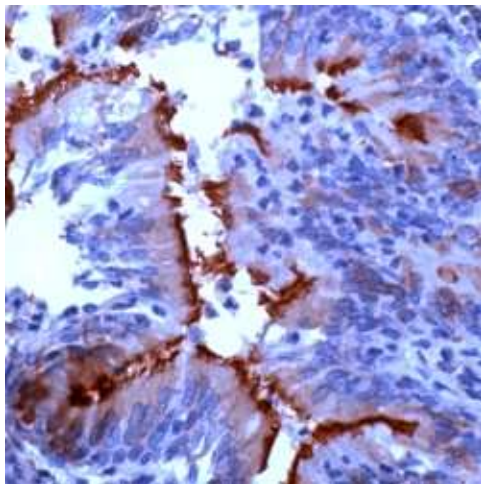
B-ALPHA-1; LIS3; TUBA3

Protein Families:

Druggable Genome

Protein Pathways:

Gap junction, Pathogenic Escherichia coli infection

Product images:

IHC: Human lung stained with Anti-Tubulin alpha antibody at 1:200 for 30 min, RT. (Staining of formalin-fixed tissues requires boiling tissue section in 10 mM Citrate Buffer, pH 6.0 for 10 min followed by cooling at RT for 20 min.)