

## Product datasheet for **TA354308**

### eNOS (NOS3) Rabbit Polyclonal Antibody

#### Product data:

Product Type:	Primary Antibodies
Applications:	IHC, WB
Recommended Dilution:	WB 0.1-1 µg/ml ELISA 0.01-0.1 µg/ml IP 2-5 µg/ml IHC 2-10 µg/ml FC 5-10 µg/ml
Reactivity:	Human, Mouse, Rat
Host:	Rabbit
Isotype:	IgG
Clonality:	Polyclonal
Immunogen:	A synthetic peptide corresponding to the internal sequence (residing in 550-650aa) of human eNOS protein. This sequence is identical among human, rat, mouse, bovine origins.
Formulation:	This affinity purified antibody is supplied in sterile Phosphate buffered saline (pH7.2) containing antibody stabilizer.
Purification:	The Rabbit IgG is purified by Epitope Affinity Purification
Conjugation:	Unconjugated
Storage:	Store at -20°C as received.
Stability:	Stable for 12 months from date of receipt.
Predicted Protein Size:	140 kDa
Gene Name:	nitric oxide synthase 3
Database Link:	<a href="#">NP_000594</a> <a href="#">Entrez Gene 18127 Mouse</a> <a href="#">Entrez Gene 24600 Rat</a> <a href="#">Entrez Gene 4846 Human</a> <a href="#">P29474</a>



[View online »](#)

**Background:**

NOS catalyzes the oxidization of L-arginine to produce L-citrulline and NO. Nitric oxide (NO) is an inorganic, gaseous free radical that carries a variety of messages between cells. Vasorelaxation, neurotransmission and cytotoxicity can all be enhanced through cellular response to NO. NO production is mediated by members of the nitric oxide synthase (NOS) family. There are three types of NOS: two constitutive isoforms, brain or neuronal NOS (b or nNOS, type I) & endothelial cell NOS (eNOS, type III), and one inducible isoform (iNOS, type II). iNOS is found in a variety of cell types including macrophages, hepatocytes, synoviocytes, and smooth muscle cells. Cytokines such as interferon-gamma (IFN), tumor necrosis factor (TNF), interleukin-1 and -2, and lipopolysaccharides (LPS) cause an increase in iNOS mRNA, protein, and activity levels. The phosphorylation of eNOS by Protein kinase C was associated with an increase in NO production.

**Synonyms:**

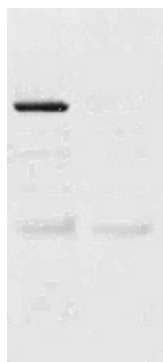
ECNOS; eNOS

**Protein Families:**

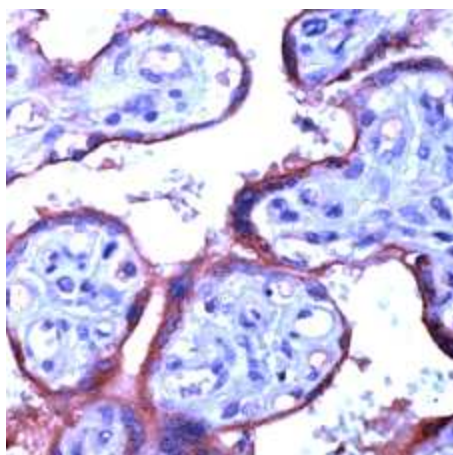
Druggable Genome

**Protein Pathways:**

Alzheimer's disease, Amyotrophic lateral sclerosis (ALS), Arginine and proline metabolism, Calcium signaling pathway, Long-term depression, Metabolic pathways, Pathways in cancer, Small cell lung cancer, VEGF signaling pathway

**Product images:**


WB: The tissue lysate derived from mouse lung was immunoprecipitated by Rabbit anti-eNOS antibody, then immuno-blotted by the same antibody at 1:500 (lane 1), Lane 2: BSA as a negative control.



IHC: Human placenta tissue stained with AntieNOS antibody, at 1:50 for 10 min at RT. Staining of formalin-fixed tissue requires boiling tissue sections in 10 mM Citrate Buffer, pH 6.0 for 10 min followed by cooling at RT for 20 min.