

## Product datasheet for **TA354295**

### Actin (ACTA1) Rabbit Polyclonal Antibody

#### Product data:

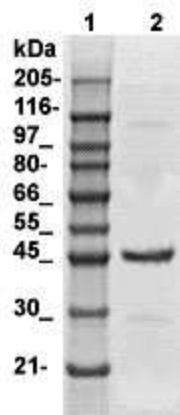
Product Type:	Primary Antibodies
Applications:	IHC, WB
Recommended Dilution:	WB 0.1-1 µg/ml ELISA 0.01-0.1 µg/ml IP 2-5 µg/ml IHC 2-10 µg/ml FC 5-10 µg/ml
Reactivity:	Human, Rat, Rabbit, Guinea Pig
Host:	Rabbit
Isotype:	IgG
Clonality:	Polyclonal
Immunogen:	A synthetic peptide derived from N-terminus of human alpha skeletal muscle isoforms of actin. This sequence is identical in human, rat, mouse, dog, bovine, guinea pig, sheep and frog origins.
Formulation:	This affinity purified antibody is supplied in sterile Phosphate buffered saline (pH7.2) containing antibody stabilizer.
Purification:	The Rabbit IgG is purified by Epitope Affinity Purification
Conjugation:	Unconjugated
Storage:	Store at -20°C as received.
Stability:	Stable for 12 months from date of receipt.
Predicted Protein Size:	~42 kDa
Gene Name:	actin, alpha 1, skeletal muscle
Database Link:	<a href="#">NP_001091</a> <a href="#">Entrez Gene 29437 Rat</a> <a href="#">Entrez Gene 58 Human</a> <a href="#">P68133</a>
Background:	The Actin protein, a component of the eukaryotic cytoskeleton, is highly conserved between multiple species. This ubiquitous protein involved in the formation of filaments that are a major component of the cytoskeleton. Interaction with myosin provides the basis of muscular contraction and many aspects of cell motility. The levels of the Actin protein may vary between different cell types, but are consistent within a given cell type, and for this reason, Actin protein levels are considered an internal control for protein loading.
Synonyms:	ACTA; ASMA; CFTD; CFTD1; CFTDM; MPFD; NEM1; NEM2; NEM3; SHPM



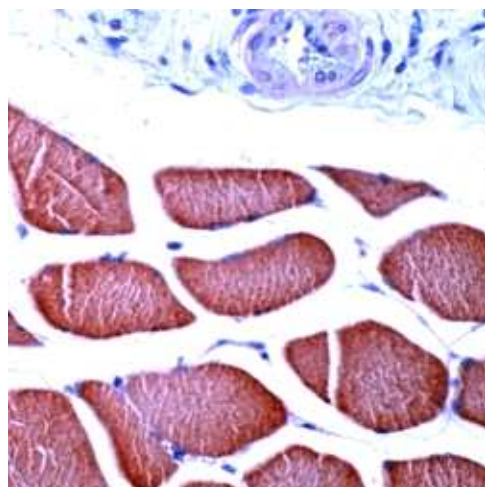
[View online »](#)

Protein Families: Stem cell - Pluripotency

### Product images:



WB: Tissue lysate from Mouse skeletal muscle was resolved onto 12% SDS-PAGE and transferred onto NC Membrane, then probed by Anti-Actin antibody (skeletal muscle specific ; at 1:500 (Lane 2). An immunoreactive protein at ~42 kDa was observed.



IHC: Skeletal muscle tissue stained with Anti-Actin antibody, at 1:200 for 10 min at RT. Staining of formalin-fixed tissue requires boiling tissue sections in 10 mM Citrate Buffer, pH 6.0 for 10 min followed by cooling at RT for 20 min.