

## Product datasheet for **TA354292**

### beta V Tubulin (TUBB) Rabbit Polyclonal Antibody

#### Product data:

Product Type:	Primary Antibodies
Applications:	IHC
Recommended Dilution:	WB 0.1-1 µg/ml ELISA 0.01-0.1 µg/ml IP 2-5 µg/ml IHC 2-10 µg/ml FC 5-10 µg/ml
Reactivity:	Human, Mouse, Rat
Host:	Rabbit
Isotype:	IgG
Clonality:	Polyclonal
Immunogen:	A synthetic peptide corresponding to aa 416-430 of human tubulin beta. This sequence is identical among human, rat, mouse, bovine, guinea pig, chicken, gerbil, frog, yeast, fungi, sea urchin, Myxamoeba and plasmodium.
Formulation:	This affinity purified antibody is supplied in sterile Phosphate buffered saline (pH7.2) containing antibody stabilizer.
Purification:	The Rabbit IgG is purified by Epitope Affinity Purification
Conjugation:	Unconjugated
Storage:	Store at -20°C as received.
Stability:	Stable for 12 months from date of receipt.
Predicted Protein Size:	50 kDa
Gene Name:	tubulin beta class I
Database Link:	<a href="#">NP_001280141</a> <a href="#">Entrez Gene 203068 Human P07437</a>



[View online »](#)

**Background:**

Tubulin is the major building block of microtubules which is essential in cell structures, transportation and mitosis. This superfamily is composed of six distinct families. Alpha, beta, and gamma tubulin families are found in all eukaryotes. The alpha and beta tubulins represent the major components of microtubules, while gamma tubulin plays a critical role in the nucleation of microtubule assembly. There are multiple alpha and beta tubulin genes, which are highly conserved among species. The abundance of Gamma tubulin is less than 1% of the level of either alpha or beta tubulin. It shares approximately 28-32% identity with alpha tubulin from various organisms and 32-36% identity with beta tubulins. The detection, localization and characterization of proteins involved in microtubule function is fundamental to the understanding of mitosis, meiosis and the microtubule cytoskeleton.

**Synonyms:**

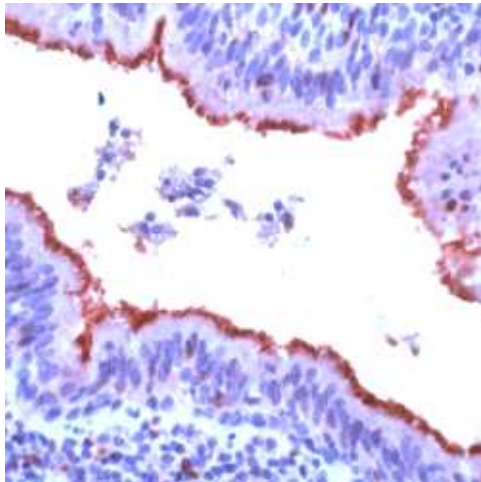
CDCBM6; CSCSC1; M40; OK; SW-cl.56; TUBB1; TUBB5

**Protein Families:**

Druggable Genome

**Protein Pathways:**

Gap junction, Pathogenic Escherichia coli infection

**Product images:**

IHC: Human lung stained with Anti-Tubulin beta antibody at 1:200 for 30 min, RT. (Staining of formalin-fixed tissues requires boiling tissue section in 10 mM Citrate Buffer, pH 6.0 for 10 min followed by cooling at RT for 20 min.)