

## Product datasheet for **TA354274**

### PKC epsilon (PRKCE) Rabbit Polyclonal Antibody

#### Product data:

|                         |   |
|-------------------------|---|
| Product Type:           | Primary Antibodies  |
| Applications:           | WB  |
| Recommended Dilution:   | WB 0.1-1 µg/ml ELISA 0.01-0.1 µg/ml IP 2-5 µg/ml IHC 2-10 µg/ml FC 5-10 µg/ml   |
| Reactivity:             | Human, Mouse, Rat   |
| Host:                   | Rabbit  |
| Isotype:                | IgG   |
| Clonality:              | Polyclonal  |
| Immunogen:              | A synthetic peptide corresponding to C-term of human PKC epsilon. This sequence is identical to mouse and rat.  |
| Formulation:            | This affinity purified antibody is supplied in sterile Phosphate buffered saline (pH7.2) containing antibody stabilizer.  |
| Purification:           | The Rabbit IgG is purified by Epitope Affinity Purification   |
| Conjugation:            | Unconjugated  |
| Storage:                | Store at -20°C as received.   |
| Stability:              | Stable for 12 months from date of receipt.  |
| Predicted Protein Size: | ~85 kDa   |
| Gene Name:              | protein kinase C epsilon  |
| Database Link:          | <a href="#">NP_005391</a><br><a href="#">Entrez Gene 18754 Mouse</a> <a href="#">Entrez Gene 29340 Rat</a> <a href="#">Entrez Gene 5581 Human</a><br><a href="#">Q02156</a>   |
| Background:             | Protein kinase C (PKC) is a family of serine- and threonine-specific protein kinases that can be activated by calcium and the second messenger diacylglycerol. PKC family members phosphorylate a wide variety of protein targets and are known to be involved in diverse cellular signaling pathways. Protein kinase C epsilon is one of the PKC family members. This kinase has been shown to be involved in many different cellular functions, such as neuron channel activation, apoptosis, cardioprotection from ischemia, heat shock response, insulin exocytosis, It is physically associated with the phosphorylation of cytokeratins 8/18. |
| Synonyms:               | nPKC-epsilon; PKCE  |

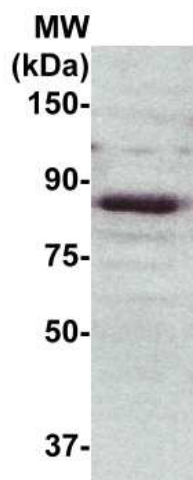


[View online »](#)

**Protein Families:** Druggable Genome, Protein Kinase

**Protein Pathways:** Fc epsilon RI signaling pathway, Fc gamma R-mediated phagocytosis, Tight junction, Type II diabetes mellitus, Vascular smooth muscle contraction

**Product images:**



WB: The cell lysate derived from SKBR-3 was immunoblotted by the Rabbit anti-PKC-epsilon antibody at 1:500. An immunoreactive bands was observed around ~85 kDa.