

## Product datasheet for **TA354265**

### Claudin 1 (CLDN1) Rabbit Polyclonal Antibody

#### Product data:

Product Type:	Primary Antibodies
Applications:	IHC, WB
Recommended Dilution:	WB 0.1-1 µg/ml ELISA 0.01-0.1 µg/ml IP 2-5 µg/ml IHC 2-10 µg/ml FC 5-10 µg/ml
Reactivity:	Human, Mouse, Rat
Host:	Rabbit
Isotype:	IgG
Clonality:	Polyclonal
Immunogen:	A synthetic peptide from C-terminus of human claudin 1 protein.
Formulation:	This affinity purified antibody is supplied in sterile Phosphate buffered saline (pH7.2) containing antibody stabilizer.
Purification:	The Rabbit IgG is purified by Epitope Affinity Purification
Conjugation:	Unconjugated
Storage:	Store at -20°C as received.
Stability:	Stable for 12 months from date of receipt.
Predicted Protein Size:	22 kDa
Gene Name:	claudin 1
Database Link:	<a href="#">NP_066924</a> <a href="#">Entrez Gene 12737 Mouse</a> <a href="#">Entrez Gene 65129 Rat</a> <a href="#">Entrez Gene 9076 Human</a> <a href="#">O95832</a>
Background:	The claudin superfamily consists of many structurally related proteins in humans. These proteins, which include claudin 1 through 18, are important structural and functional components of tight junctions in paracellular transport. The tight junctions are specialized regions of cell to cell contact. Claudins are located in both epithelial and endothelial cells in all tight junction-bearing tissues. Claudins, which consist of four trans-membrane domains and two extracellular loops, make up tight junction strands. Different tissues exhibit different Claudin composition.
Synonyms:	CLD1; ILVASC; SEMP1
Protein Families:	Transmembrane



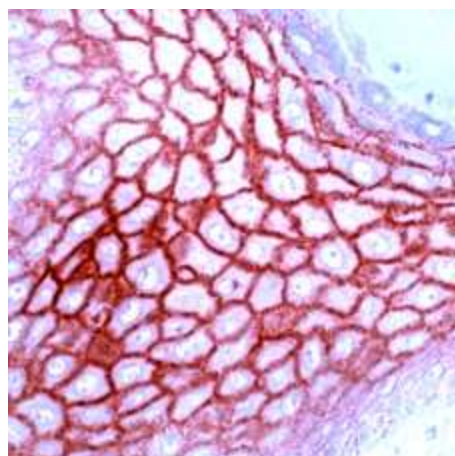
[View online »](#)

**Protein Pathways:** Cell adhesion molecules (CAMs), Leukocyte transendothelial migration, Pathogenic Escherichia coli infection, Tight junction

**Product images:**



WB: The Cell lysate derived from 80% confluence -A431 was immunoprobed by Rabbit anti-Claudin 1 antibody at 1:500. An immunoreactive band is observed around ~22kDa.



IHC: Human skin tissue stained with Anti-Claudin 1 antibody, at 1:200 for 10 min at RT. Staining of formalin-fixed tissue requires boiling tissue sections in 10 mM Citrate Buffer, pH 6.0 for 10 min followed by cooling at RT for 20 min.