

Product datasheet for **TA354261**

Bcl x (BCL2L1) Rabbit Polyclonal Antibody

Product data:

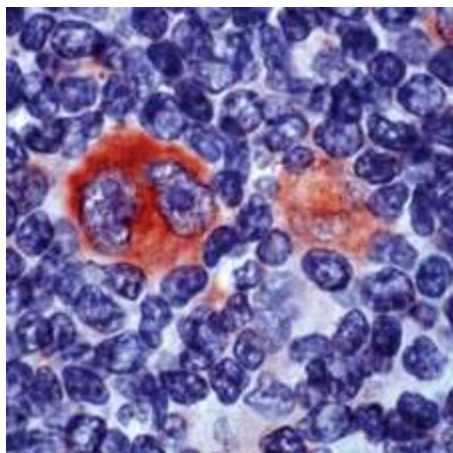
Product Type:	Primary Antibodies
Applications:	IHC
Recommended Dilution:	WB 0.1-1 µg/ml ELISA 0.01-0.1 µg/ml IP 2-5 µg/ml IHC 2-10 µg/ml FC 5-10 µg/ml
Reactivity:	Human, Mouse
Host:	Rabbit
Isotype:	IgG
Clonality:	Polyclonal
Immunogen:	A synthetic peptide derived from N-terminus of human BCL-X protein. This sequence is identical in human and mouse.
Formulation:	This affinity purified antibody is supplied in sterile Phosphate buffered saline (pH7.2) containing antibody stabilizer.
Purification:	The Rabbit IgG is purified by Epitope Affinity Purification
Conjugation:	Unconjugated
Storage:	Store at -20°C as received.
Stability:	Stable for 12 months from date of receipt.
Predicted Protein Size:	27 kDa
Gene Name:	BCL2 like 1
Database Link:	NP_001182 Entrez Gene 12048 Mouse Entrez Gene 598 Human Q07817
Background:	Bcl-X is a member of the Bcl-2 family of proteins, which function as regulators of apoptosis. Bcl-X has two isoforms, Bcl-Xl (long) a 241 amino acid protein and Bcl-Xs (short) a 178 amino acid protein lacking a 63 amino acid domain that is well conserved among members of the Bcl-2 family.
Synonyms:	Bcl-X; BCL-XL; BCL2L; BCLX; PPP1R52; S
Protein Families:	Druggable Genome, ES Cell Differentiation/IPS, Transmembrane



[View online »](#)

Protein Pathways: Amyotrophic lateral sclerosis (ALS), Apoptosis, Chronic myeloid leukemia, Jak-STAT signaling pathway, Pancreatic cancer, Pathways in cancer, Small cell lung cancer

Product images:



IHC: Human Hodgkin's lymphoma stained with Anti-BCL-X antibody, at 1:25 for 10 min at RT. Staining of formalin-fixed cells requires boiling tissue sections in 10 mM Citrate Buffer, pH 6.0 for 10 min followed by cooling at RT for 20 min.