

Product datasheet for **TA354260**

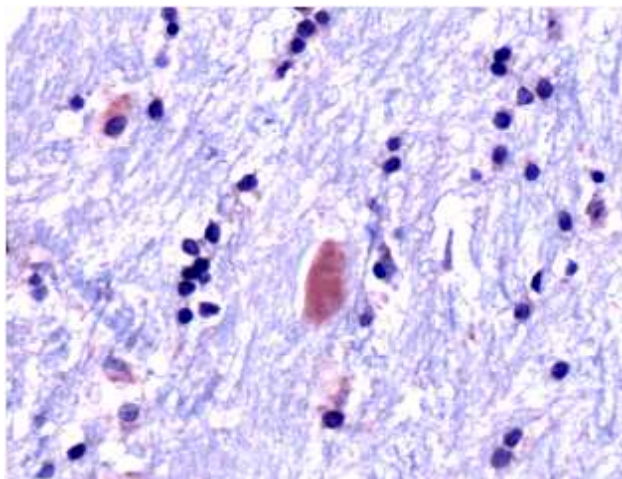
Ubiquitin (UBB) Rabbit Polyclonal Antibody

Product data:

Product Type:	Primary Antibodies
Applications:	IHC
Recommended Dilution:	WB 0.1-1 µg/ml ELISA 0.01-0.1 µg/ml IP 2-5 µg/ml IHC 2-10 µg/ml FC 5-10 µg/ml
Reactivity:	Human
Host:	Rabbit
Isotype:	IgG
Clonality:	Polyclonal
Immunogen:	A synthetic peptide corresponding to C-term of ubiquitin protein.
Formulation:	This affinity purified antibody is supplied in sterile Phosphate buffered saline (pH7.2) containing antibody stabilizer.
Purification:	The Rabbit IgG is purified by Epitope Affinity Purification
Conjugation:	Unconjugated
Storage:	Store at -20°C as received.
Stability:	Stable for 12 months from date of receipt.
Gene Name:	ubiquitin B
Database Link:	NP_001268645 Entrez Gene 7314 Human P0CG47
Background:	Ubiquitin (Ub) is a highly conserved protein of approximately 8.5 kDa. It plays a very important role in regulated non-lysosomal ATP dependent protein degradation. The protein to be degraded is covalently attached to C-term of ubiquitin, and the ubiquitinated protein is then selectively degraded by a 26S complex, multicatalytic cytosolic and nuclear protease termed proteasome. The Ub-proteasome proteolytic pathway, which is a complex process, is implicated to be of great importance for regulating numerous cellular processes.
Synonyms:	FLJ25987; MGC8385; OTTHUMP00000064960; OTTHUMP00000064961; UBA80; UBCEP1; UBCEP2
Protein Families:	Druggable Genome
Protein Pathways:	Parkinson's disease



[View online »](#)

Product images:

IHC: Human Alzheimer brain stained with Anti-ubiquitin antibody, at 1:100 for 10 min at RT. Staining of formalin-fixed tissue requires boiling tissue sections in 10 mM Citrate Buffer, pH 6.0 for 10 min followed by cooling at RT for 20 min.