

Product datasheet for **TA354256**

BCL2 Rabbit Polyclonal Antibody

Product data:

Product Type:	Primary Antibodies
Applications:	IHC
Recommended Dilution:	WB 0.1-1 µg/ml ELISA 0.01-0.1 µg/ml IP 2-5 µg/ml IHC 2-10 µg/ml FC Not tested
Reactivity:	Human
Host:	Rabbit
Isotype:	IgG
Clonality:	Polyclonal
Immunogen:	A synthetic peptide corresponding to aa 41-54 of human BCL-2 alpha.
Formulation:	This affinity purified antibody is supplied in sterile Phosphate buffered saline (pH7.2) containing antibody stabilizer.
Purification:	The Rabbit IgG is purified by Epitope Affinity Purification
Conjugation:	Unconjugated
Storage:	Store at -20°C as received.
Stability:	Stable for 12 months from date of receipt.
Predicted Protein Size:	26 kDa
Gene Name:	B-cell CLL/lymphoma 2
Database Link:	NP_000624 Entrez Gene 596 Human P10415
Background:	The Bcl-2 gene codes for a 26 kDa protein which has been implicated in the control of cell death by apoptosis, in normal tissues, expression of bcl-2 is restricted to cells and tissues that are characterized by apoptotic cell turnover. Bcl-2 protein exerts a survival function in response to a wide range of apoptotic stimuli through inhibition of mitochondrial cytochrome c release, thus it is also considered as an inner mitochondrial membrane protein which can be expressed in lymphoma and breast carcinoma cells. This protein modulates mitochondrial calcium homeostasis and proton flux. BCL-2 protein is frequently overexpressed in many lymphoid malignancies, thus it can immunohistologically distinguish neoplastic germinal centers from reactive ones.



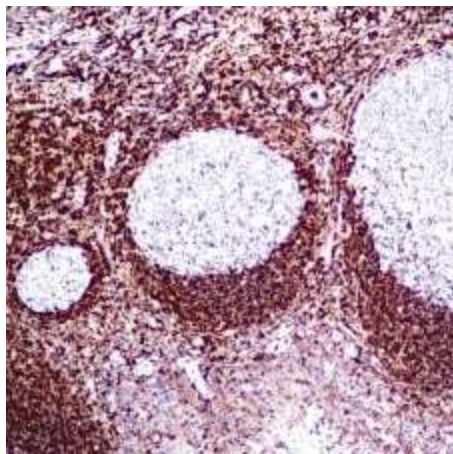
[View online »](#)

Synonyms: Bcl-2; PPP1R50

Protein Families: Druggable Genome, ES Cell Differentiation/IPS, Stem cell - Pluripotency, Transmembrane

Protein Pathways: Amyotrophic lateral sclerosis (ALS), Apoptosis, Colorectal cancer, Focal adhesion, Neurotrophin signaling pathway, Pathways in cancer, Prostate cancer, Small cell lung cancer

Product images:



Human tonsil tissue stained with Anti-BCL-2 antibody, at 1:50 for 10 min at RT. Staining of formalin-fixed tissue requires boiling tissue sections in 10 mM Citrate Buffer, pH 6.0 for 10 min followed by cooling at RT for 20 min.