

## Product datasheet for **TA354250**

### CD247 Rabbit Polyclonal Antibody

#### Product data:

Product Type:	Primary Antibodies
Applications:	IHC, WB
Recommended Dilution:	WB 0.1-1 µg/ml ELISA 0.01-0.1 µg/ml IP 2-5 µg/ml IHC 2-10 µg/ml FC 5-10 µg/ml
Reactivity:	Human, Mouse, Rat
Host:	Rabbit
Isotype:	IgG
Clonality:	Polyclonal
Immunogen:	A synthetic peptide corresponding to the N-terminus of human CD3 zeta. This sequence is identical among human, rat and mouse species.
Formulation:	This affinity purified antibody is supplied in sterile Phosphate buffered saline (pH7.2) containing antibody stabilizer.
Purification:	The Rabbit IgG is purified by Epitope Affinity Purification
Conjugation:	Unconjugated
Storage:	Store at -20°C as received.
Stability:	Stable for 12 months from date of receipt.
Predicted Protein Size:	~20 kDa
Gene Name:	CD247 molecule
Database Link:	<a href="#">NP_000725</a> <a href="#">Entrez Gene 12503 Mouse</a> <a href="#">Entrez Gene 25300 Rat</a> <a href="#">Entrez Gene 919 Human</a> <a href="#">P20963</a>



[View online »](#)

**Background:**

CD3 is a glycoprotein consisting of up to five polypeptide chains (gp20, gp26, p16, p20, p28). It forms three dimers: a heterodimer of gamma and epsilon chain, a heterodimer of delta and epsilon chains and a homodimer of two zeta chains or a heterodimer of zeta and eta chains. CD3 is required for proper assembly, trafficking and surface expression of TCR complex. CD3 is expressed by thymocytes in a developmentally regulated manner and by all mature T cells. CD3 is involved in T cell activation, proliferation and apoptosis pathway. This protein is present on virtually all peripheral blood T cells and thymocytes. The CD3 zeta plays an important role in coupling antigen recognition to several intracellular signal transduction pathway. Low expression of the antigen results in impaired immune response.

**Synonyms:**

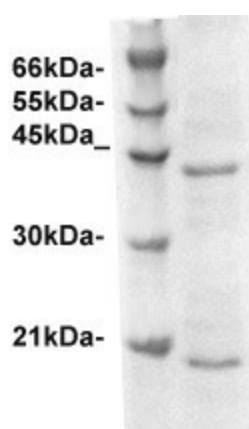
CD3-ZETA; CD3H; CD3Q; CD3Z; IMD25; T3Z; TCRZ

**Protein Families:**

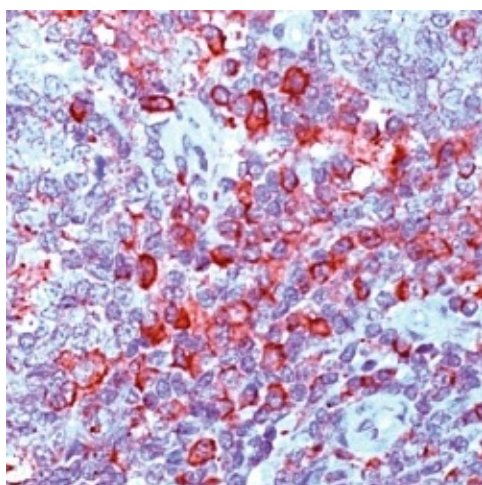
Druggable Genome, Transmembrane

**Protein Pathways:**

Natural killer cell mediated cytotoxicity, T cell receptor signaling pathway

**Product images:**

WB: Jurkat cell lysate was resolved onto 12% SDS-PAGE, and followed by immunoblotting with Rabbit anti-CD3 zeta antibody at 1:500. Two immunoreactive proteins were observed at ~20 kDa (monomer) and ~42 kDa (Dimer).



IHC: Human tonsil tissue stained with Anti-CD3 zeta antibody at 1:100 for 10 min at RT. Staining of formalin-fixed tissue requires boiling tissue sections in 10 mM Citrate Buffer, pH 6.0 for 10 min followed by cooling at RT for 20 min.