

Product datasheet for **TA354240**

GSK3 alpha (GSK3A) Rabbit Polyclonal Antibody

Product data:

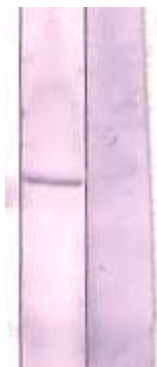
Product Type:	Primary Antibodies
Applications:	WB
Recommended Dilution:	WB 0.1-1 µg/ml ELISA 0.01-0.1 µg/ml IP 2-5 µg/ml IHC 2-10 µg/ml FC 5-10 µg/ml
Reactivity:	Human, Mouse, Rat
Host:	Rabbit
Isotype:	IgG
Clonality:	Polyclonal
Immunogen:	A synthetic peptide corresponding to N-terminus of human GSK3-alpha protein. This sequence is identical among human, mouse and rat.
Formulation:	This affinity purified antibody is supplied in sterile Phosphate buffered saline (pH7.2) containing antibody stabilizer.
Purification:	The Rabbit IgG is purified by Epitope Affinity Purification
Conjugation:	Unconjugated
Storage:	Store at -20°C as received.
Stability:	Stable for 12 months from date of receipt.
Predicted Protein Size:	52 kDa
Gene Name:	glycogen synthase kinase 3 alpha
Database Link:	NP_063937 Entrez Gene 50686 Rat Entrez Gene 606496 Mouse Entrez Gene 2931 Human P49840
Background:	Glycogen Synthase Kinase-3 has two isoforms, GSK-3a and GSK3β. GSK3 is a serine/threonine kinase that affects glycogen metabolism by phosphorylating and down-regulating the activity of muscle glycogen synthase as well as the regulation in Wnt signal pathway. GSK-3 alpha reduces the substrates beta-catenin and tau to imply an important role in Wnt signaling and tauopathies such as Alzheimer's disease..
Synonyms:	DKFZp686D0638
Protein Families:	Druggable Genome, Protein Kinase



[View online »](#)

Protein Pathways: Chemokine signaling pathway

Product images:



WB: The 3T3 cell lysate was resolved onto 10% SDS-PAGE, transferred onto NC membrane, and followed by an immunoblotting with Rabbit anti-GSK-3 alpha antibody at 1:500 (lane 1). Lane 2 was preincubated with immunizing peptide