

Product datasheet for **TA354237**

GABA B Receptor 1 (GABBR1) Rabbit Polyclonal Antibody

Product data:

| | |
|--------------------------------|--|
| Product Type: | Primary Antibodies |
| Applications: | WB |
| Recommended Dilution: | WB 0.1-1 µg/ml ELISA 0.01-0.1 µg/ml IP 2-5 µg/ml IHC 2-10 µg/ml FC 5-10 µg/ml |
| Reactivity: | Human, Mouse, Rat |
| Host: | Rabbit |
| Isotype: | IgG |
| Clonality: | Polyclonal |
| Immunogen: | A synthetic peptide derived from N-term of human GABA receptor 1 protein. This sequence is identical to human and rat. |
| Formulation: | This affinity purified antibody is supplied in sterile Phosphate buffered saline (pH7.2) containing antibody stabilizer. |
| Purification: | The Rabbit IgG is purified by Epitope Affinity Purification |
| Conjugation: | Unconjugated |
| Storage: | Store at -20°C as received. |
| Stability: | Stable for 12 months from date of receipt. |
| Predicted Protein Size: | 100 kDa |
| Gene Name: | gamma-aminobutyric acid type B receptor subunit 1 |
| Database Link: | NP_001461 Entrez Gene 54393 Mouse Entrez Gene 81657 Rat Entrez Gene 2550 Human Q9UBS5 |
| Background: | Gamma-aminobutyric acid (GABA) is the main inhibitory neurotransmitter in the mammalian central nervous system. It acts at GABA receptors to produce fast synaptic inhibitory signals. The GABA(B) receptor consists of a heterodimer of two related 7-transmembrane receptors, GABA(B) receptor 1 and GABA(B) receptor 2. The overexpression of one particular gene encoding for G-protein-activated inward rectifying potassium type 2 (GIRK2) channel subunit and its coupling to GABA(B) receptors may contribute to a range of mental and functional disabilities |
| Synonyms: | GABABR1; GABBR1-3; GB1; GPRC3A |

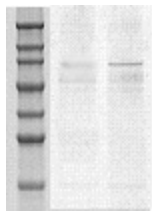


[View online »](#)

Protein Families: Druggable Genome, GPCR, Secreted Protein, Transmembrane

Protein Pathways: Neuroactive ligand-receptor interaction

Product images:



WB: The brain tissue lysate derived from mouse (lane 1) and rat brain (lane 2) was immunoblotted by the Rabbit anti-GABA receptor 1 at 1:500. A major immunoreactive band is observed at ~100 kDa.