

Product datasheet for **TA354236**

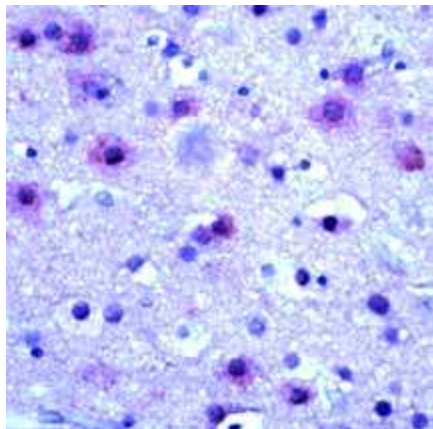
Metabotropic Glutamate Receptor 5 Rabbit Polyclonal Antibody

Product data:

Product Type:	Primary Antibodies
Applications:	IHC
Recommended Dilution:	WB 0.1-1 µg/ml ELISA 0.01-0.1 µg/ml IP 2-5 µg/ml IHC 2-10 µg/ml FC 5-10 µg/ml
Reactivity:	Human, Rat, Rabbit
Host:	Rabbit
Isotype:	IgG
Clonality:	Polyclonal
Immunogen:	A synthetic peptide derived from C-terminus of human Glutamate receptor. This sequence is identical to human and rat.
Formulation:	This affinity purified antibody is supplied in sterile Phosphate buffered saline (pH7.2) containing antibody stabilizer.
Purification:	The Rabbit IgG is purified by Epitope Affinity Purification
Conjugation:	Unconjugated
Storage:	Store at -20°C as received.
Stability:	Stable for 12 months from date of receipt.
Predicted Protein Size:	130 kDa
Database Link:	NP_000833 Entrez Gene 24418 Rat
Background:	Glutamate receptors constitute the principal excitatory neurotransmitter receptors in brain. Two classes of glutamate receptors exist: ionotropic receptors, and metabotropic receptors. Ionotropic glutamate receptors are oligomeric complexes of various subunits (GluR1-7, NMDA1-3, KAI-2) which comprise ligand-gated calcium channels. Metabotropic glutamate receptors are G-protein coupled receptors, which when activated can activate phospholipases or adenylylcyclase, depending on the neuron.
Synonyms:	GPCR1E; mGlu5; MGLUR5; PPP1R86
Protein Families:	Druggable Genome, GPCR, Transmembrane
Protein Pathways:	Calcium signaling pathway, Gap junction, Huntington's disease, Long-term depression, Long-term potentiation, Neuroactive ligand-receptor interaction



[View online »](#)

Product images:

IHC: Human brain tissue stained with Anti-mGluR antibody at 1:50 for 10 min at RT. Staining of formalin-fixed tissue requires boiling tissue sections in 10 mM Citrate Buffer, pH 6.0 for 10 min followed by cooling at RT for 20 min.