

Product datasheet for **TA354234**

Sumo 3 (SUMO3) Rabbit Polyclonal Antibody

Product data:

Product Type:	Primary Antibodies
Applications:	WB
Recommended Dilution:	WB 0.1-1 µg/ml ELISA Not tested IP 2-5 µg/ml IHC 2-10 µg/ml FC Not tested
Reactivity:	Human
Host:	Rabbit
Isotype:	IgG
Clonality:	Polyclonal
Immunogen:	A synthetic peptide derived from C-terminus of human Sentrin-3 protein. This sequence is identical to human, mouse and rat.
Formulation:	This affinity purified antibody is supplied in sterile Phosphate buffered saline (pH7.2) containing antibody stabilizer.
Purification:	The Rabbit IgG is purified by Epitope Affinity Purification
Conjugation:	Unconjugated
Storage:	Store at -20°C as received.
Stability:	Stable for 12 months from date of receipt.
Predicted Protein Size:	12 kDa
Gene Name:	small ubiquitin-like modifier 3
Database Link:	NP_001273345 Entrez Gene 6612 Human P55854
Background:	Sentrin-3 also known as SUMO-3 is a 103-amino acids peptide that has high homologous to Sentrin-1/SUMO-1. This novel ubiquitin-like protein can be covalently attached to proteins as a monomer or as a lysine-linked polymer. Covalent attachment via an isopeptide bond to its substrates requires prior activation by the E1 complex SAE1-SAE2 and linkage to the E2 enzyme UBE2I, and can be promoted by an E3 ligase such as PIAS1-4, RANBP2 or CBX4. This post-translational modification on lysine residues of proteins plays a crucial role in a number of cellular processes such as nuclear transport, DNA replication and repair, mitosis and signal transduction.

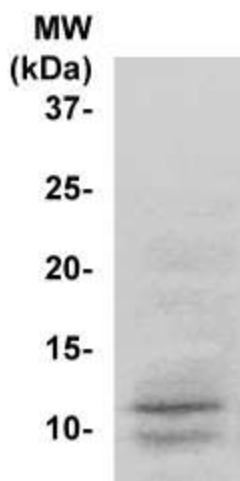


[View online »](#)

Synonyms: SMT3A; Smt3B; SMT3H1; SUMO-3

Protein Families: Druggable Genome

Product images:



WB: The cell lysate derived from HeLa cells was immunoblotted by the Rabbit anti-Sentrin-3 antibody at 1:500. An immunoreactive band is observed at ~12 kDa.