

Product datasheet for **TA354233**

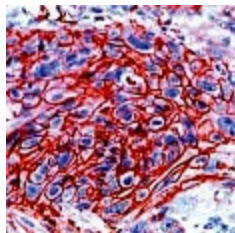
Glucose Transporter GLUT1 (SLC2A1) Rabbit Polyclonal Antibody

Product data:

Product Type:	Primary Antibodies
Applications:	IHC
Recommended Dilution:	WB 0.1-1 µg/ml ELISA 0.01-0.1 µg/ml IP 2-5 µg/ml IHC 2-10 µg/ml FC 5-10 µg/ml
Reactivity:	Human, Mouse, Rat
Host:	Rabbit
Isotype:	IgG
Clonality:	Polyclonal
Immunogen:	A synthetic peptide derived from C-terminus of human Glut-1 Protein. This sequence is identical to human and rat.
Formulation:	This affinity purified antibody is supplied in sterile Phosphate buffered saline (pH7.2) containing antibody stabilizer.
Purification:	The Rabbit IgG is purified by Epitope Affinity Purification
Conjugation:	Unconjugated
Storage:	Store at -20°C as received.
Stability:	Stable for 12 months from date of receipt.
Predicted Protein Size:	55 kDa
Gene Name:	solute carrier family 2 member 1
Database Link:	NP_006507 Entrez Gene 20525 Mouse Entrez Gene 24778 Rat Entrez Gene 6513 Human P11166
Background:	Glucose is fundamental to the metabolism of mammalian cells. Several glucose transporter protein (Glut) isoforms have been identified and shown to function in response to insulin and IGF-1 induced signaling. GLUT-1 is detectable in many human tissues including those of the colon, lung, stomach, esophagus, and breast.
Synonyms:	CSE; DYT9; DYT17; DYT18; EIG12; GLUT; GLUT-1; GLUT1; GLUT1DS; HTLVR; PED; SDCHCN
Protein Families:	Druggable Genome, ES Cell Differentiation/IPS, Transmembrane
Protein Pathways:	Adipocytokine signaling pathway, Pathways in cancer, Renal cell carcinoma



[View online »](#)

Product images:

IHC: Human esophagus tissue stained with Anti-GLUT1 antibody at 1:50 for 10 min at RT. Staining of formalin-fixed tissue requires boiling tissue sections in 10 mM Citrate Buffer, pH 6.0 for 10 min followed by cooling at RT for 20 min.