

Product datasheet for **TA354223**

Sumo 2 (SUMO2) Rabbit Polyclonal Antibody

Product data:

Product Type:	Primary Antibodies
Applications:	WB
Recommended Dilution:	WB 0.1-1 µg/ml ELISA Not tested IP 2-5 µg/ml IHC 2-10 µg/ml FC Not tested
Reactivity:	Human
Host:	Rabbit
Isotype:	IgG
Clonality:	Polyclonal
Immunogen:	A synthetic peptide derived from C-terminus of human Sentrin-2 protein. This sequence is identical to human, mouse and rat.
Formulation:	This affinity purified antibody is supplied in sterile Phosphate buffered saline (pH7.2) containing antibody stabilizer.
Purification:	The Rabbit IgG is purified by Epitope Affinity Purification
Conjugation:	Unconjugated
Storage:	Store at -20°C as received.
Stability:	Stable for 12 months from date of receipt.
Predicted Protein Size:	10 kDa
Gene Name:	small ubiquitin-like modifier 2
Database Link:	NP_001005849 Entrez Gene 6613 Human P61956



[View online »](#)

Background:

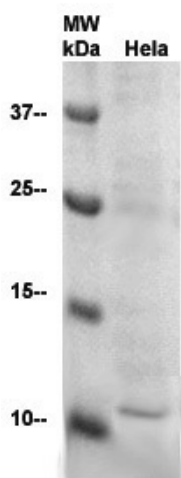
Sentrin-2 also known as SUMO-2 is a 95-amino acids peptide that has high homologous to Sentrin-1/SUMO-1. This novel ubiquitin-like protein that can be covalently attached to proteins as a monomer or as a lysine-linked polymer. Covalent attachment via an isopeptide bond to its substrates requires prior activation by the E1 complex SAE1-SAE2 and linkage to the E2 enzyme UBE2I, and can be promoted by an E3 ligase such as PIAS1-4, RANBP2 or CBX4. This post-translational modification on lysine residues of proteins plays a crucial role in a number of cellular processes such as nuclear transport, DNA replication and repair, mitosis and signal transduction. Polymeric SUMO2 chains are also susceptible to polyubiquitination which functions as a signal for proteasomal degradation of modified proteins.

Synonyms:

HSMT3; Smt3A; SMT3B; SMT3H2; SUMO3

Protein Families:

Druggable Genome

Product images:

WB: The cell lysate derived from HeLa cells was immunoblotted by the Rabbit anti-Sentrin-2 antibody at 1:500. An immunoreactive band is observed at ~10 kDa.