

## Product datasheet for **TA354214**

### Caspase 9 (CASP9) Rabbit Polyclonal Antibody

#### Product data:

Product Type:	Primary Antibodies
Applications:	IHC, WB
Recommended Dilution:	WB 0.1-1 µg/ml ELISA 0.01-0.1 µg/ml IP 2-5 µg/ml IHC 2-10 µg/ml FC 5-10 µg/ml
Reactivity:	Human
Host:	Rabbit
Isotype:	IgG
Clonality:	Polyclonal
Immunogen:	A synthetic peptide derived from N-terminus of human Caspase 9 protein
Formulation:	This affinity purified antibody is supplied in sterile Phosphate buffered saline (pH7.2) containing antibody stabilizer.
Purification:	The Rabbit IgG is purified by Epitope Affinity Purification
Conjugation:	Unconjugated
Storage:	Store at -20°C as received.
Stability:	Stable for 12 months from date of receipt.
Predicted Protein Size:	47 kDa
Gene Name:	caspase 9
Database Link:	<a href="#">NP_001220</a> <a href="#">Entrez Gene 842 Human</a> <a href="#">P55211</a>
Background:	Caspase-9 belongs to a member of the cysteine-aspartic acid protease (Caspase) family. Sequential activation of caspases plays a central role in the execution-phase of cell apoptosis. Caspases exist as inactive proenzymes which undergo proteolytic processing at conserved aspartic residues to produce two subunits, large and small. Those dimerize to form the active enzyme. Activation of procaspase-9 by Apaf-1 in the Cytochrome C/dATP-dependent pathway requires proteolytic cleavage to generate the mature caspase molecule. Once activated, caspase-9 can initiate a caspase cascade involving the downstream executioner caspase-3, -6 and -7.
Synonyms:	APAF-3; APAF3; ICE-LAP6; MCH6; PPP1R56



[View online »](#)

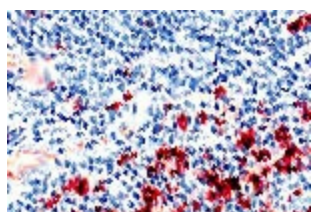
**Protein Families:** Druggable Genome, Protease, Stem cell - Pluripotency

**Protein Pathways:** Alzheimer's disease, Amyotrophic lateral sclerosis (ALS), Apoptosis, Colorectal cancer, Endometrial cancer, Huntington's disease, Non-small cell lung cancer, p53 signaling pathway, Pancreatic cancer, Parkinson's disease, Pathways in cancer, Prostate cancer, Small cell lung cancer, VEGF signaling pathway, Viral myocarditis

**Product images:**



WB: The cell lysate derived from Jurkat was immunoprobed by Rabbit anti-Caspase-7 antibody at 1:500. An immunoreactive band is observed around ~35 kDa.



IHC: Human liver tissue stained with Anti-Caspase 9 antibody at 1:50 for 10 min at RT. Staining of formalin-fixed tissue requires boiling tissue sections in 10 mM Citrate Buffer, pH 6.0 for 10 min followed by cooling at RT for 20 min.