

Product datasheet for **TA354200**

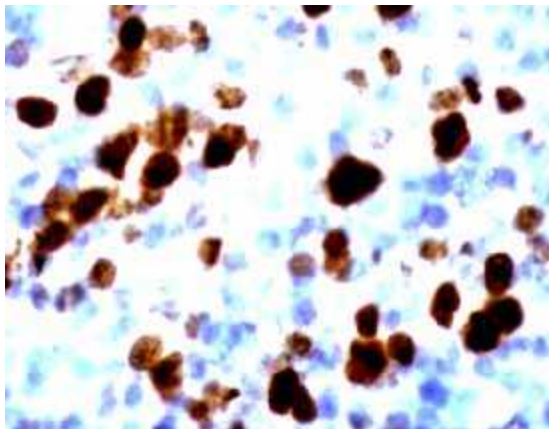
Ki67 (MKI67) Rabbit Polyclonal Antibody

Product data:

Product Type:	Primary Antibodies
Applications:	IHC
Recommended Dilution:	WB 0.1-1 µg/ml ELISA 0.01-0.1 µg/ml IP 2-5 µg/ml IHC 2-10 µg/ml FC 5-10 µg/ml
Reactivity:	Human, Rat
Host:	Rabbit
Isotype:	IgG
Clonality:	Polyclonal
Immunogen:	A synthetic peptide derived from human Ki-67 protein
Formulation:	This affinity purified antibody is supplied in sterile Phosphate buffered saline (pH7.2) containing antibody stabilizer.
Purification:	The Rabbit IgG is purified by Epitope Affinity Purification
Conjugation:	Unconjugated
Storage:	Store at -20°C as received.
Stability:	Stable for 12 months from date of receipt.
Predicted Protein Size:	345 & 395 kDa
Gene Name:	marker of proliferation Ki-67
Database Link:	NP_001139438 Entrez Gene 291234 Rat Entrez Gene 4288 Human P46013
Background:	Ki-67, a proliferation marker is a nuclear protein that is associated with and may be necessary for cellular proliferation. It can be used as a biomarker with Bcl-2 (an apoptosis inhibitor), P53 and Pax 2 for immunohistostaining in carcinomas diagnosis. The differences in the immunocytochemical expression of those markers are correlated to the results with tumor grade and stage for a further accurate diagnosis.
Synonyms:	KIA; MIB-; MIB-1; PPP1R105
Protein Families:	Druggable Genome, ES Cell Differentiation/IPS



[View online »](#)

Product images:

IHC: Human lymph node stained with Anti-Ki-67 antibody at 1:200 for 10 min at RT. Staining of formalin-fixed tissue requires boiling tissue sections in 10 mM Citrate Buffer, pH 6.0 for 10 min followed by cooling at RT for 20 min.